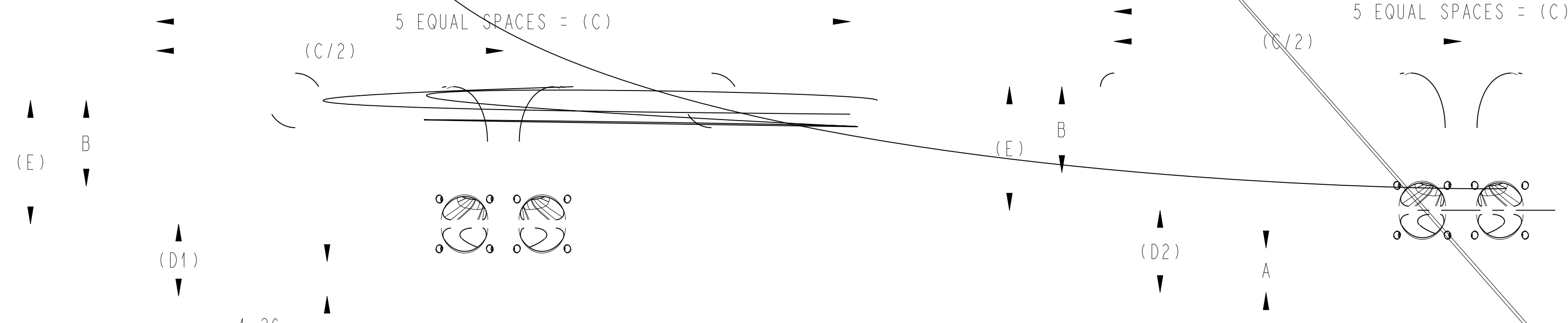
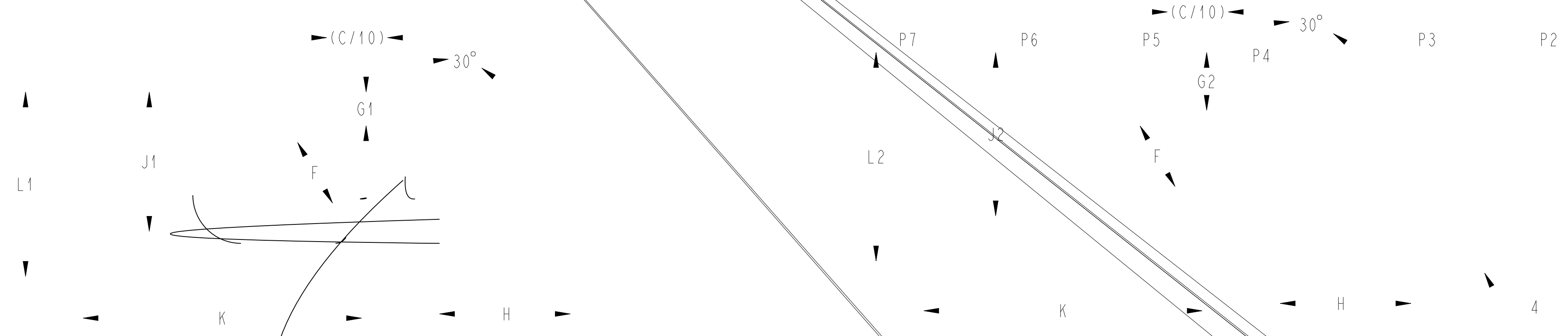


- NOTES:
 1. "P" INDICATED PORT CONNECTION.
 2. TUBE ENDS MEET OR EXCEEDS THE FOLLOWING TANGENT LENGTHS
 1/4" - 1-1/2" = 1-1/2", 2" - 3" = 1-3/4"
 3. VALVE MUST BE INSTALL WITH P1 VERTICALLY (UP OR DOWN)
 FOR OPTIMAL DRAINABILITY.
 4. ALL ELBOW WELD WILL BE IN AS WELDED CONDITION, EXCEPT WHERE CONNECTED TO FERRULE.

TAG NUMBERS
 VALVE ASSY 1 FIRST VALVE 2 SECOND VALVE 3 THIRD VALVE 4 FOURTH VALVE 5 FIFTH VALVE 6 SIXTH VALVE

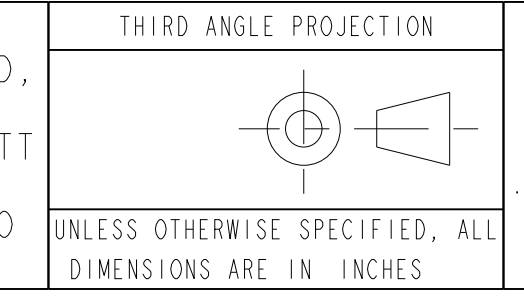
ITEM	DESCRIPTION
1	6DV (121818)
2	ELBOW 90 DEG FIXFT
3	ELBOW 90 DEG FIXWB (123290)
4	ELBOW 90 DEG WBXWB (123290)
5	ELBOW 30-DEG WBXWB (124777)
6	FERRULE TRI-CLAMP BW
7	FERRULE TRI-CLAMP SW
8	TUBING



VALVE	A	B	(C)	(D1)	(D2)	(E)	F	G1	G2	H	J1	J2	K	L1	L2
1/4" BP	1.63	2.75	(14.10)	(1.99)	(2.36)	(3.49)	1.57	1.12	2.12	2.98	3.56	4.56	6.42	4.64	5.64
1/4" BT	[41,3]	[69,9]	[358,0]	[50,5]	[59,9]	[88,5]	[39,9]	[28,5]	[53,9]	[75,7]	[90,5]	[115,9]	[163,2]	[118,0]	[143,4]
3/8" BP	1.63	2.75	(17.19)	(1.99)	(2.36)	(3.49)	2.19	1.25	2.25	3.91	4.23	5.23	7.97	5.31	6.31
3/8" BT	[41,3]	[69,9]	[436,6]	[50,5]	[59,9]	[88,5]	[55,6]	[31,8]	[57,2]	[99,3]	[107,4]	[132,8]	[202,5]	[134,9]	[160,3]
1/2" BP	1.63	3.13	(15.87)	(1.99)	(2.36)	(3.86)	1.93	1.05	2.05	3.51	3.80	4.80	7.31	4.88	5.88
1/2" BT	[41,3]	[79,4]	[403,2]	[50,5]	[59,9]	[98,0]	[48,9]	[26,7]	[52,1]	[89,2]	[96,5]	[121,9]	[185,8]	[124,0]	[149,4]
1/2" PF	1.63	3.13	(19.28)	(2.20)	(2.57)	(4.07)	1.93	1.05	2.05	3.85	4.39	5.39	8.68	6.06	7.06
	[41,3]	[79,4]	[489,7]	[55,8]	[65,2]	[103,3]	[48,9]	[26,7]	[52,1]	[97,9]	[111,5]	[136,9]	[220,3]	[154,0]	[179,4]
3/4" PF	1.63	3.13	(22.66)	(2.42)	(2.79)	(4.29)	2.43	1.30	2.30	4.69	5.23	6.23	10.28	7.05	8.05
	[41,3]	[79,4]	[575,7]	[61,3]	[70,7]	[108,8]	[61,6]	[33,0]	[58,4]	[119,2]	[132,7]	[158,1]	[261,1]	[179,1]	[204,5]
1" PF	1.63	3.13	(25.32)	(2.63)	(3.00)	(4.50)	2.90	1.40	2.40	5.43	5.79	6.79	11.58	7.66	8.66
	[41,3]	[79,4]	[643,1]	[66,8]	[76,2]	[114,3]	[73,7]	[35,6]	[61,0]	[138,0]	[147,0]	[172,4]	[294,1]	[194,6]	[220,0]
1-1/2" PF	1.63	3.88	(33.59)	(3.07)	(3.44)	(5.69)	3.85	1.60	2.60	7.21	7.42	8.42	15.36	9.90	10.90
	[41,3]	[98,4]	[853,2]	[78,0]	[87,4]	[144,5]	[97,9]	[40,7]	[66,1]	[183,2]	[188,5]	[213,9]	[390,2]	[251,5]	[276,9]
2" PF	1.88	4.88	(40.93)	(3.38)	(4.00)	(7.00)	4.80	1.80	3.05	8.90	8.89	10.14	18.77	11.82	13.07
	[47,6]	[123,8]	[1039,6]	[85,9]	[101,6]	[177,8]	[122,0]	[45,8]	[77,6]	[226,0]	[225,9]	[257,6]	[476,9]	[300,3]	[332,0]
2-1/2" PF	1.88	5.63	(56.39)	(4.32)	(4.94)	(8.69)	5.76	2.01	3.26	11.39	11.77	13.02	25.43	16.55	17.80
	[47,6]	[142,9]	[1432,2]	[109,7]	[125,5]	[220,7]	[146,2]	[50,9]	[82,7]	[289,4]	[299,0]	[330,7]	[646,0]	[420,5]	[452,2]
3" PF	1.88	6.38	(57.13)	(4.32)	(4.94)	(9.44)	6.71	2.21	3.46	12.42	12.10	13.35	26.20	16.19	17.44
	[47,6]	[161,9]	[1451,0]	[109,7]	[125,5]	[239,8]	[170,3]	[56,0]	[87,8]	[315,4]	[307,4]	[339,1]	[665,6]	[411,2]	[442,9]

PURE-FLO ORDER: _____ ITEM: _____
 CUSTOMER: _____
 CUSTOMER PO: _____
 OTHER INFO: _____

THIS DOCUMENT IS THE SOLE PROPERTY OF ITT CORPORATION, OR ITS SUBSIDIARY, AND IS PROVIDED SUBJECT TO RETURN. IT IS ISSUED IN STRICT CONFIDENCE AND SHALL NOT BE REPRODUCED, OR COPIED, OR DISCLOSED IN WHOLE OR IN PART, OR USED AS THE BASIS FOR THE MANUFACTURE OR SALES OF APPARATUS OR PARTS TO WHICH THE DOCUMENT RELATES, WITHOUT THE EXPRESS WRITTEN CONSENT OF ITT CORPORATION, OR ITS SUBSIDIARY. THIS LEGEND SHALL BE MARKED ON ANY REPRODUCTION HEREOF, IN WHOLE OR IN PART. ALL RIGHTS TO THE INFORMATION AND DESIGN DISCLOSED HEREIN ARE RESERVED TO ITT CORPORATION, OR ITS SUBSIDIARY.



UNLESS OTHERWISE NOTED	
INCH	MM
X : ± 0.06	X : ± 1.5
.XX : ± 0.06	.XX : ± 1.5
.XXX : ± 0.02	.XXX : ± 0.5
X/XX : ± 0.02	X/XX : ± 0.5
X : ± 1/16	X : ± 1.5
X : ± 1/8	X : ± 3.0

DATE	BY	DESCRIPTION
07/07/21	LFV	6 WAY DIVERT VALVE OP-3 ASSY.
07/07/21	KRP	
07/07/21	TJS	

MASTER DWG: A31974/B ECN# 18436

ITT
 www.ittpureflo.com

D A31974 SHEET 1 OF 1 REV B

ISSUE BY: _____ CERT BY: _____