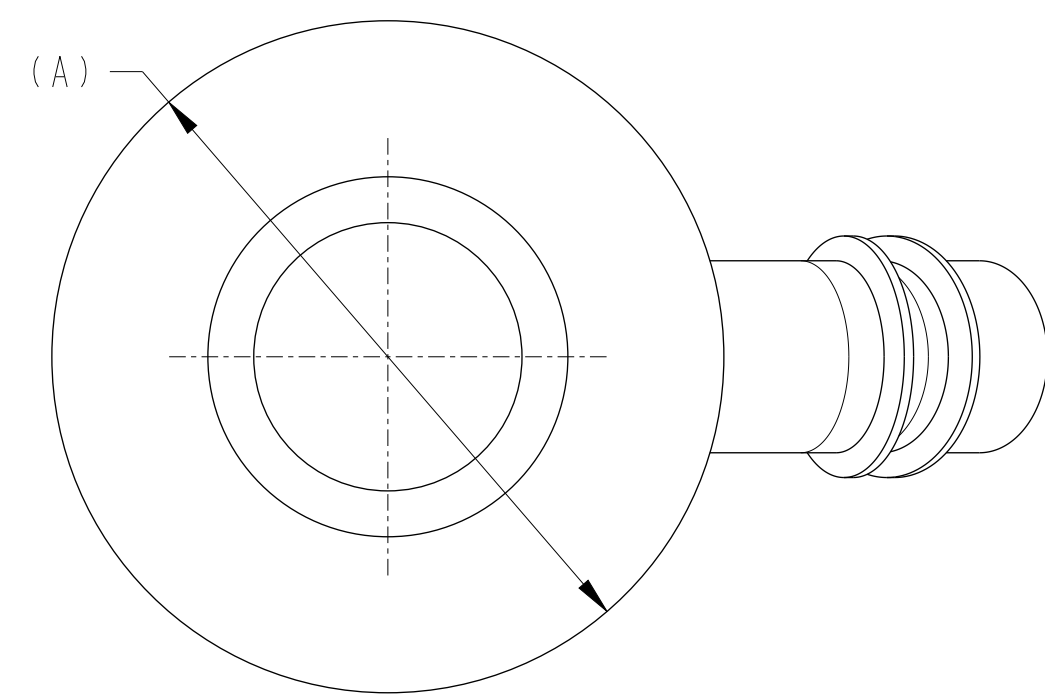


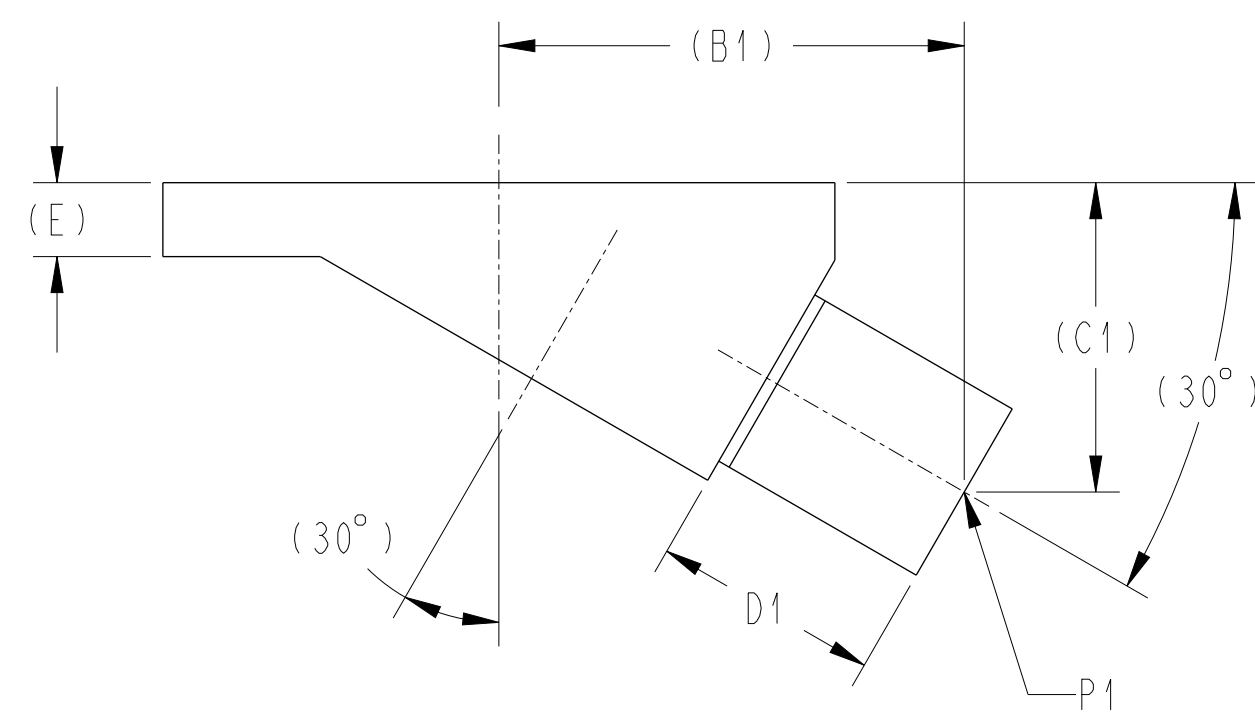
TBV SIZE	(A)	(B1)	(B2)	(B3)	(C1)	(C2)	(C3)	D1	D2	D3	(E)	BODY
1/2"	(\varnothing 2.75) [69,9]	(2.70) [68,5]	(3.95) [100,4]	(3.17) [80,5]	(2.19) [55,7]	(3.44) [87,4]	(2.66) [67,5]	1.88 [47,6]	3.59 [91,1]	2.52 [63,9]	(0.50) [12,7]	117660
1"	(\varnothing 3.75) [95,3]	(3.08) [78,1]	(4.34) [110,2]	(3.63) [92,1]	(2.22) [56,4]	(3.46) [87,8]	(2.75) [69,8]	1.88 [47,6]	3.59 [91,1]	2.62 [66,4]	(0.43) [10,9]	117661
1-1/2"	(\varnothing 5.50) [139,7]	(3.81) [96,8]	(5.22) [132,7]	(4.52) [114,9]	(2.53) [64,4]	(3.89) [98,7]	(3.18) [80,9]	1.88 [47,6]	3.78 [95,9]	2.82 [71,5]	(0.49) [12,4]	117662
2"	(\varnothing 7.00) [177,8]	(4.85) [123,1]	(6.16) [156,5]	(5.28) [134,0]	(3.22) [81,8]	(4.62) [117,4]	(3.74) [94,9]	2.38 [60,3]	4.22 [107,1]	3.01 [76,3]	(0.77) [19,6]	117663
2-1/2"	(\varnothing 10.00) [254,0]	(5.88) [149,4]	(7.46) [189,6]	(6.58) [167,1]	(4.19) [106,3]	(5.77) [146,5]	(4.88) [124,0]	2.38 [60,3]	4.54 [115,2]	3.33 [84,5]	(0.94) [23,9]	124623
3"	(\varnothing 10.00) [254,0]	(6.14) [156,0]	(7.93) [201,5]	(7.13) [181,2]	(3.99) [101,3]	(5.72) [145,4]	(4.93) [125,1]	2.38 [60,3]	4.80 [121,8]	3.71 [94,1]	(0.94) [23,9]	117664
4"	(\varnothing 11.88) [301,8]	(6.81) [173,0]	(9.30) [236,2]	(8.74) [222,1]	(5.31) [134,9]	(7.58) [192,5]	(7.02) [178,4]	2.38 [60,3]	5.67 [143,9]	4.91 [124,6]	(0.72) [18,3]	117665
6"	(\varnothing 15.00) [381,0]	(8.54) [216,9]	(14.89) [378,1]	(12.70) [322,7]	(6.06) [153,9]	(11.42) [290,2]	(9.24) [234,8]	3.25 [82,6]	11.43 [290,3]	8.45 [214,6]	(1.50) [38,1]	M10709



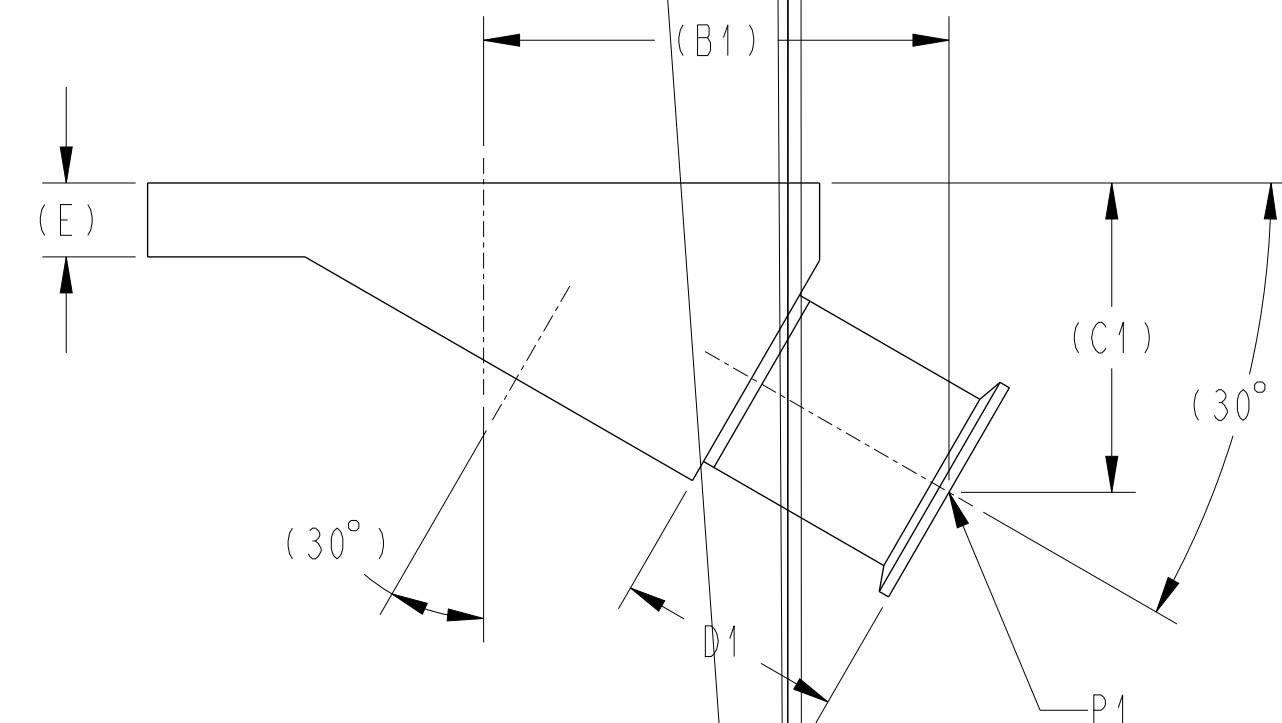
TOP VIEW

NOTE:

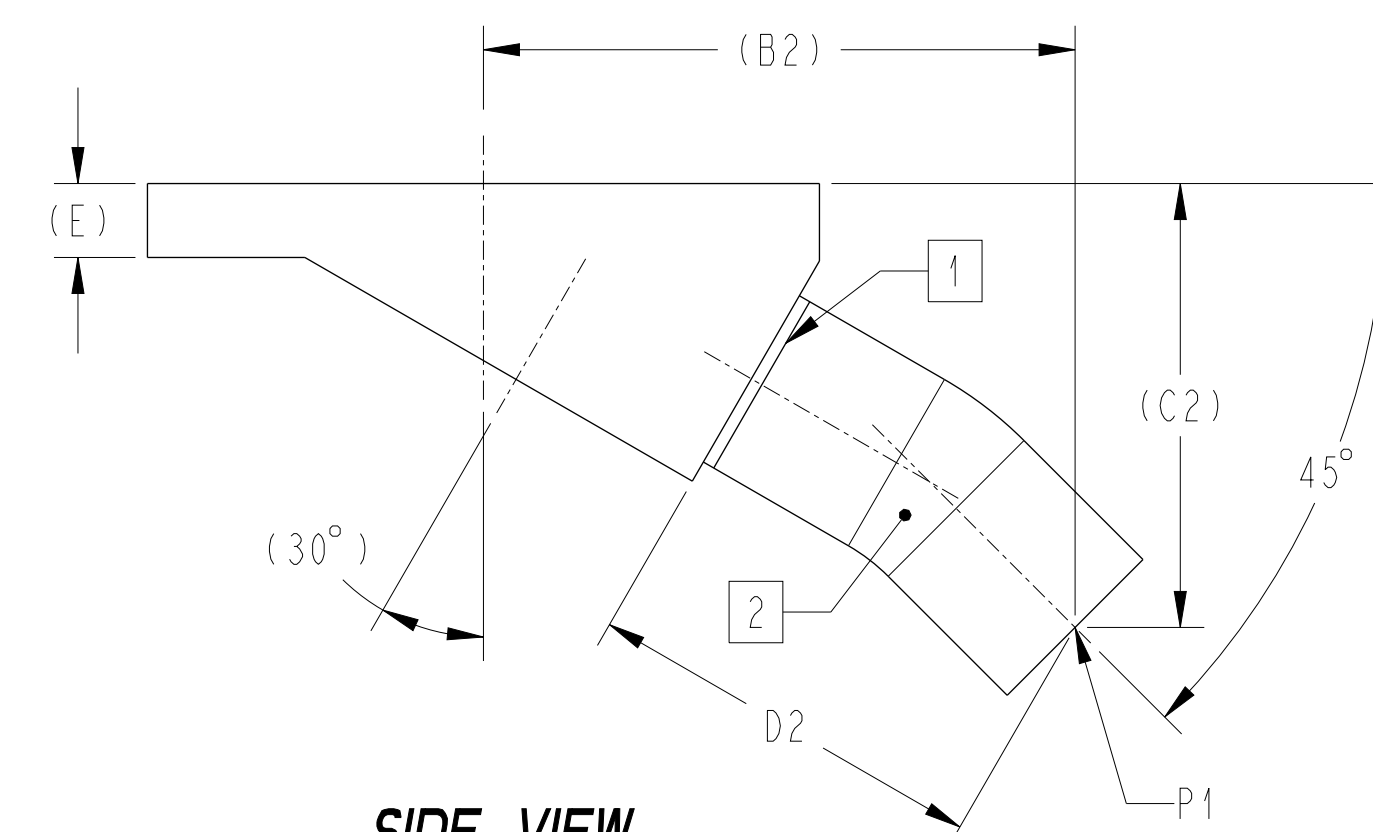
1. INTERNAL WELD WILL BE LEFT IN THE AS WELDED CONDITION.
2. REFER TO THE FOLLOWING DRAWINGS FOR ELBOW FABRICATION:
*TC - 115202
*BW - 117915
3. FOR 0.50 SAMPLING VALVE, USE BODY DRAWING 117666.
4. REFER TO DRAWING 114421 FOR TBV STUDS.
USE HEAVY HEX NUTS AND TYPE B NARROW WASHERS.



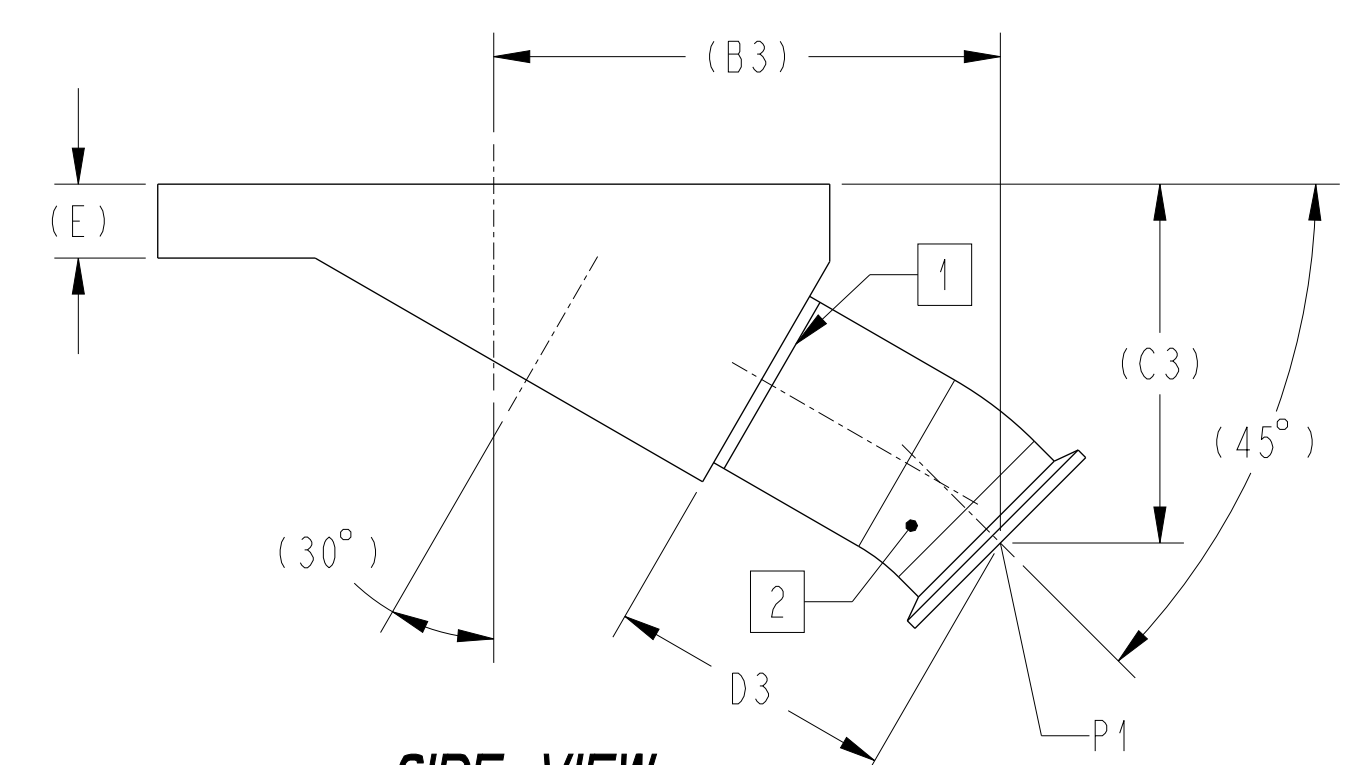
SIDE VIEW
STANDARD BW



SIDE VIEW
STANDARD TC



SIDE VIEW
45 DEGREE BW



SIDE VIEW
45 DEGREE TC

PURE-FLO ORDER: - ITEM: -
CUSTOMER: -
CUSTOMER PO: -
OTHER INFO: -

THIS DOCUMENT IS THE SOLE PROPERTY OF ITT CORPORATION, OR ITS SUBSIDIARY, AND IS PROVIDED SUBJECT TO RETURN. IT IS ISSUED IN STRICT CONFIDENCE.

ITT CORPORATION, OR ITS SUBSIDIARY.

-RVED TO

THIRD ANGLE PROJECTION
UNLESS OTHERWISE SPECIFIED, ALL DIMENSIONS ARE IN INCHES [MM]

UNLESS OTHERWISE NOTED
INCH MM
X : ± 0.06 X : ± 1.5
XX : ± 0.06 XX : ± 1.5
XXX : ± 0.02 XXX : ± 1.5
X/2 : ± 1/16 X : ± 1.5
X : ± 1.5

DATE	BY
03/24/23	JAS
03/24/23	KP
03/24/23	TJS

TANK BOTTOM VALVE
PF BODY FABRICATION

MASTER DWG: A36811A/A



A36811A

ISSUE BY: - CERT BY: -

Pure-Flo
www.ittpureflo.com

SHEET 1 OF 1 REV A