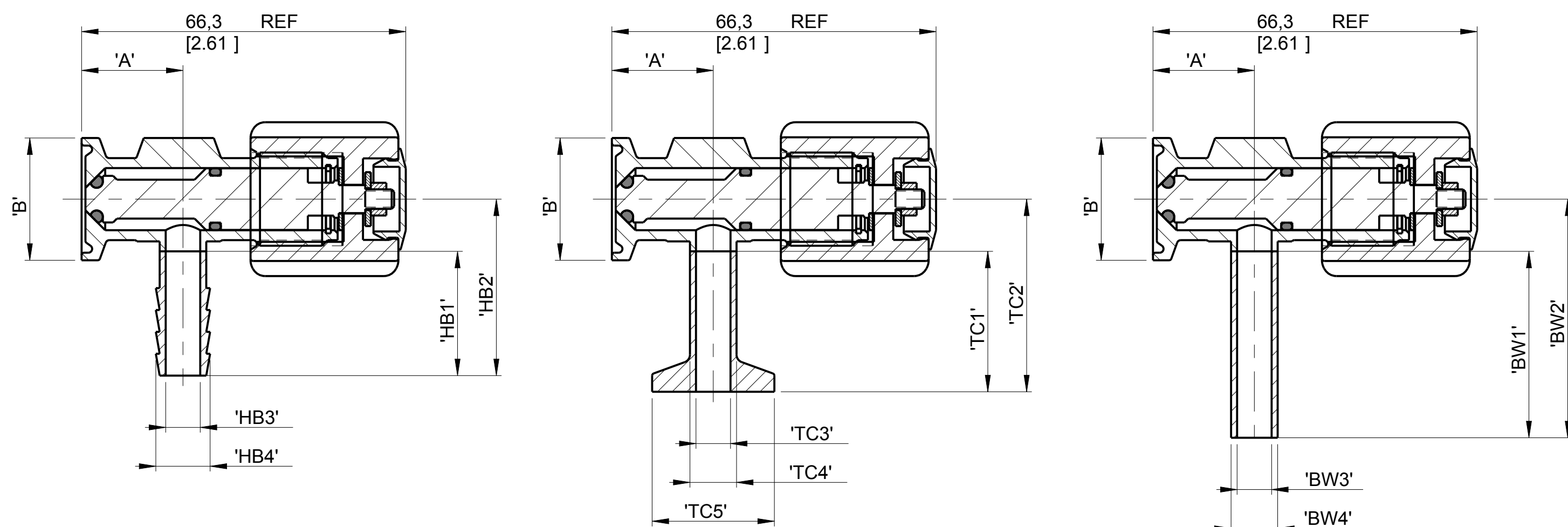


	8	7		6				5		4					3			2				1															
		DESCRIPTION		'A'	'B'	'HB1'	'HB2'	'HB3'	'HB4'	'TC1'	'TC2'	FERRULE OUTLET			BUTT WELD OUTLET		'BW1'	'BW2'	'BW3'	'BW4'																	
																			FOR 00.25 TO 00.75																		
D	00.25-00.75 X 00.125	22,33 [0.879]	24,99 [0.984]	22,10 [0.870]	32,77 [1.290]	2,00 [0.079]	3,80 [0.150]	-	-	-	-	-	-	-	-	-	-	-	-																		
	00.25-00.75 X 00.25-20GA			4,57 [0.180]	7,92 [0.312]	4,57 [0.180]	6,35 [0.250]	4,57 [0.180]	6,35 [0.250]	4,57 [0.180]	6,35 [0.250]																										
	00.25-00.75 X 00.25-18GA			3,87 [0.152]	7,92 [0.312]	3,87 [0.152]	6,35 [0.250]	3,87 [0.152]	6,35 [0.250]	3,87 [0.152]	6,35 [0.250]																										
	00.25-00.75 X 00.38-20GA	20,73 [0.816]		25,40 [1.000]	36,07 [1.420]	7,75 [0.305]	11,10 [0.437]	28,70 [1.130]	39,37 [1.550]	7,75 [0.305]	9,53 [0.375]	24,99 [0.984]	38,10 [1.500]	48,77 [1.920]	7,75 [0.305]	9,53 [0.375]																					
	00.25-00.75 X 00.38-18GA	7,05 [0.278]		11,10 [0.437]	7,05 [0.278]	9,53 [0.375]	7,05 [0.278]	9,53 [0.375]	7,05 [0.278]	9,53 [0.375]																											
00.25-00.75 X 00.50-16GA	19,89 [0.783]	25,40 [1.000]	36,07 [1.420]	9,40 [0.370]	14,27 [0.562]	28,70 [1.130]	39,37 [1.550]	9,40 [0.370]	12,70 [0.500]	24,99 [0.984]	38,10 [1.500]	48,77 [1.920]	9,40 [0.370]	12,70 [0.500]																							
																			FOR 01.00 TO 01.50																		
D	01.00-01.50 X 00.125	21,56 [0.849]	50,39 [1.984]	22,10 [0.870]	46,36 [1.825]	2,00 [0.079]	3,80 [0.150]	-	-	-	-	-	-	-	-	-	-	-	-																		
	01.00-01.50 X 00.25-20GA			4,57 [0.180]	7,92 [0.312]	4,57 [0.180]	6,35 [0.250]	4,57 [0.180]	6,35 [0.250]	4,57 [0.180]	6,35 [0.250]																										
	01.00-01.50 X 00.25-18GA			3,87 [0.152]	7,92 [0.312]	3,87 [0.152]	6,35 [0.250]	3,87 [0.152]	6,35 [0.250]	3,87 [0.152]	6,35 [0.250]																										
	01.00-01.50 X 00.38-20GA	19,96 [0.786]		25,40 [1.000]	49,66 [1.955]	7,75 [0.305]	11,10 [0.437]	28,70 [1.130]	52,96 [2.085]	7,75 [0.305]	9,53 [0.375]	24,99 [0.984]	38,10 [1.500]	62,36 [2.455]	7,75 [0.305]	9,53 [0.375]																					
	01.00-01.50 X 00.38-18GA	7,05 [0.278]		11,10 [0.437]	7,05 [0.278]	9,53 [0.375]	7,05 [0.278]	9,53 [0.375]	7,05 [0.278]	9,53 [0.375]																											
01.00-01.50 X 00.50-16GA	19,13 [0.753]	25,40 [1.000]	49,66 [1.955]	9,40 [0.370]	14,27 [0.562]	28,70 [1.130]	52,96 [2.085]	9,40 [0.370]	12,70 [0.500]	24,99 [0.984]	38,10 [1.500]	62,36 [2.455]	9,40 [0.370]	12,70 [0.500]																							
																			FOR 02.00																		
D	02.00 X 00.125	21,56 [0.849]	63,91 [2.516]	22,10 [0.870]	46,10 [1.815]	2,00 [0.079]	3,80 [0.150]	-	-	-	-	-	-	-	-	-	-	-	-																		
	02.00 X 00.25-20GA			4,57 [0.180]	7,92 [0.312]	4,57 [0.180]	6,35 [0.250]	4,57 [0.180]	6,35 [0.250]	4,57 [0.180]	6,35 [0.250]																										
	02.00 X 00.25-18GA			3,87 [0.152]	7,92 [0.312]	3,87 [0.152]	6,35 [0.250]	3,87 [0.152]	6,35 [0.250]	3,87 [0.152]	6,35 [0.250]																										
	02.00 X 00.38-20GA	19,96 [0.786]		25,40 [1.000]	39,37 [1.550]	7,75 [0.305]	11,10 [0.437]	28,70 [1.130]	52,70 [2.075]	7,75 [0.305]	9,53 [0.375]	24,99 [0.984]	38,10 [1.500]	62,10 [2.445]	7,75 [0.305]	9,53 [0.375]																					
	02.00 X 00.38-18GA	7,05 [0.278]		11,10 [0.437]	7,05 [0.278]	9,53 [0.375]	7,05 [0.278]	9,53 [0.375]	7,05 [0.278]	9,53 [0.375]																											
02.00 X 00.50-16GA	19,13 [0.753]	25,40 [1.000]	39,37 [1.550]	9,40 [0.370]	14,27 [0.562]	28,70 [1.130]	52,70 [2.075]	9,40 [0.370]	12,70 [0.500]	24,99 [0.984]	38,10 [1.500]	62,10 [2.445]	9,40 [0.370]	12,70 [0.500]																							
																			FOR 02.50																		
C	02.50 X 00.125	21,56 [0.849]	77,39 [3.047]	22,10 [0.870]	46,10 [1.815]	2,00 [0.079]	3,80 [0.150]	-	-	-	-	-	-	-	-	-	-	-	-																		
	02.50 X 00.25-20GA			4,57 [0.180]	7,92 [0.312]	4,57 [0.180]	6,35 [0.250]	4,57 [0.180]	6,35 [0.250]	4,57 [0.180]	6,35 [0.250]																										
	02.50 X 00.25-18GA			3,87 [0.152]	7,92 [0.312]	3,87 [0.152]	6,35 [0.250]	3,87 [0.152]	6,35 [0.250]	3,87 [0.152]	6,35 [0.250]																										
	02.50 X 00.38-20GA	19,96 [0.786]		25,40 [1.000]	57,79 [2.275]	7,75 [0.305]	11,10 [0.437]	28,70 [1.130]	61,09 [2.405]	7,75 [0.305]	9,53 [0.375]	24,99 [0.984]	38,10 [1.500]	70,49 [2.775]	7,75 [0.305]	9,53 [0.375]																					
	02.50 X 00.38-18GA	7,05 [0.278]		11,10 [0.437]	7,05 [0.278]	9,53 [0.375]	7,05 [0.278]	9,53 [0.375]	7,05 [0.278]	9,53 [0.375]																											
02.50 X 00.50-16GA	19,13 [0.753]	25,40 [1.000]	57,79 [2.275]	9,40 [0.370]	14,27 [0.562]	28,70 [1.130]	61,09 [2.405]	9,40 [0.370]	12,70 [0.500]	24,99 [0.984]	38,10 [1.500]	70,49 [2.775]	9,40 [0.370]	12,70 [0.500]																							
																			FOR 03.00																		
C	03.00 X 00.125	21,56 [0.849]	90,91 [3.579]	22,10 [0.870]	46,10 [1.815]	2,00 [0.079]	3,80 [0.150]	-	-	-	-	-	-	-	-	-	-	-	-																		
	03.00 X 00.25-20GA			4,57 [0.180]	7,92 [0.312]	4,57 [0.180]	6,35 [0.250]	4,57 [0.180]	6,35 [0.250]	4,57 [0.180]	6,35 [0.250]																										
	03.00 X 00.25-18GA			3,87 [0.152]	7,92 [0.312]	3,87 [0.152]	6,35 [0.250]	3,87 [0.152]	6,35 [0.250]	3,87 [0.152]	6,35 [0.250]																										
	03.00 X 00.38-20GA	19,96 [0.786]		25,40 [1.000]	60,33 [2.375]	7,75 [0.305]	11,10 [0.437]	28,70 [1.130]	63,63 [2.505]	7,75 [0.305]	9,53 [0.375]	24,99 [0.984]	38,10 [1.500]	73,03 [2.875]	7,75 [0.305]	9,53 [0.375]																					
	03.00 X 00.38-18GA	7,05 [0.278]		11,10 [0.437]	7,05 [0.278]	9,53 [0.375]	7,05 [0.278]	9,53 [0.375]	7,05 [0.278]	9,53 [0.375]																											
03.00 X 00.50-16GA	19,13 [0.753]	25,40 [1.000]	60,33 [2.375]	9,40 [0.370]	14,27 [0.562]	28,70 [1.130]	63,63 [2.505]	9,40 [0.370]	12,70 [0.500]	24,99 [0.984]	38,10 [1.500]	73,03 [2.875]	9,40 [0.370]	12,70 [0.500]																							

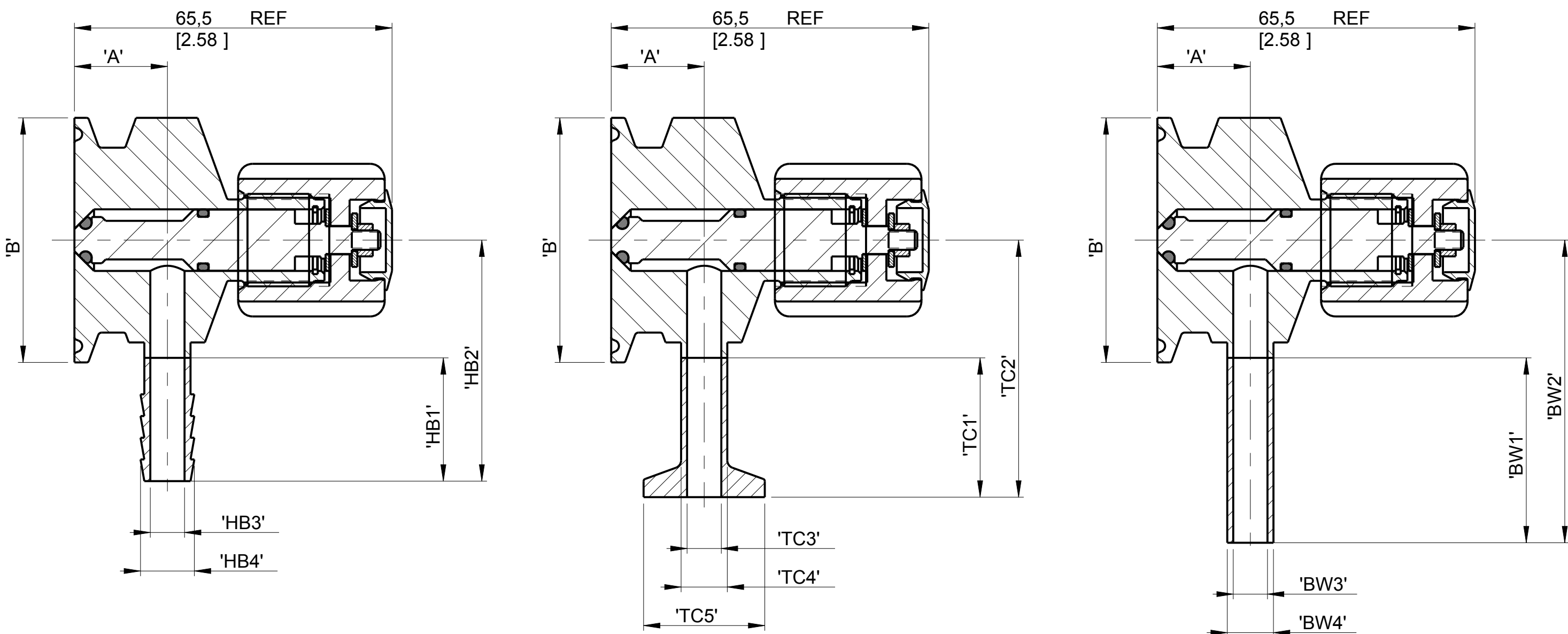
NOTES:

- 1. INTERNAL SURFACE 0.3 µm Ra [11 µ-in Ra]
- 2. EXTERNAL 1.6 µm Ra [64 µ-in Ra]
- 3. FOR 3,175 [0.125] OUTLET USE 6,35 [0.25] PORT, OUTLET USES A REDUCER.

FOR 0.25" TO 0.75" SAMPLE VALVES (HB / TC / BW)



FOR 1.00" TO 3.00" SAMPLE VALVES (HB / TC / BW)



ECN# 12623

UNLESS OTHERWISE SPECIFIED, ALL DIMENSIONS IN BRACKETS [] ARE INCHES.

PATTERN NO.

THIS DOCUMENT IS THE SOLE PROPERTY OF ITT CORPORATION, OR ITS SUBSIDIARY, AND IS PROVIDED SUBJECT TO RETURN. IT IS ISSUED IN STRICT CONFIDENCE AND SHALL NOT BE REPRODUCED, OR COPIED, OR DISCLOSED IN WHOLE OR IN PART, OR USED AS THE BASIS FOR THE MANUFACTURE OR SALES OF APPARATUS OR PARTS TO WHICH THE DOCUMENT RELATES, WITHOUT THE EXPRESS WRITTEN CONSENT OF ITT CORPORATION, OR ITS SUBSIDIARY. THIS LEGEND SHALL BE MARKED ON ANY REPRODUCTION HEREOF, IN WHOLE OR IN PART. ALL RIGHTS TO THE INFORMATION AND DESIGN DISCLOSED HEREIN ARE RESERVED TO ITT CORPORATION, OR ITS SUBSIDIARY.

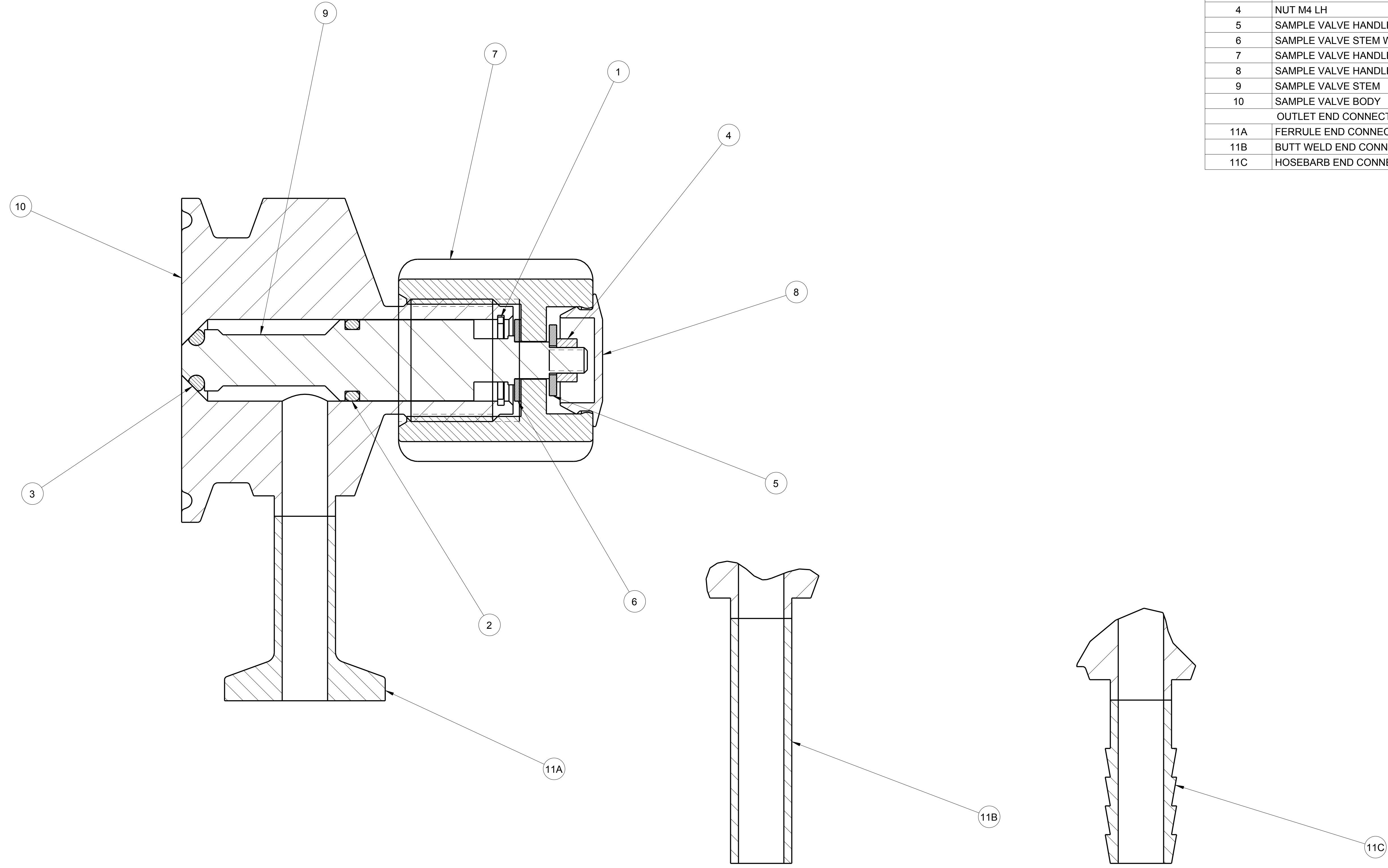
THIRD ANGLE PROJECTION	UNLESS OTHERWISE NOTED		WEIGHT	SCALE	SAMPLE VALVE ASSEMBLY	ITC X (HB/TC/BW)	ANSI	00.25 TO 03.00	SUPERSEDES: -
	INCH	M/M		1.000					
	X = ±0.06	[X] = ±.76	DATE	BY					
X = ±0.03	[X] = ±.50	DWN	08-May-12	P.N.	SIZE	DRAWING NUMBER	SHEET	REV	
XXX = ±0.005	[XX] = ±.12	CHKD	08-May-12	S.P.					
XXX = ±0.005	[XX] = ±.12	APVD	08-May-12	S.P.	D	K17431	1 OF 2	A	
UNLESS OTHERWISE SPECIFIED, ALL DIMENSIONS ARE IN INCHES		REMOVE ALL BURS AND SHARP EDGES MACHINED SURFACES TO BE EXCEPT AS NOTED		ITT LANCASTER, PA USA					

8 7 6 5 4 3 2 1

LIST OF MAJOR COMPONENTS		
ITEM	DESCRIPTION	QUANTITY
1	CIRCLIP / RETAINING RING	1
2	O-RING 2-012	1
3	O-RING 2-105	1
4	NUT M4 LH	1
5	SAMPLE VALVE HANDLE WASHER	1
6	SAMPLE VALVE STEM WASHER	1
7	SAMPLE VALVE HANDLE	1
8	SAMPLE VALVE HANDLE CAP	1
9	SAMPLE VALVE STEM	1
10	SAMPLE VALVE BODY	1
OUTLET END CONNECTION OPTIONS		
11A	FERRULE END CONNECTION	1
11B	BUTT WELD END CONNECTION	1
11C	HOSEBARB END CONNECTION	1

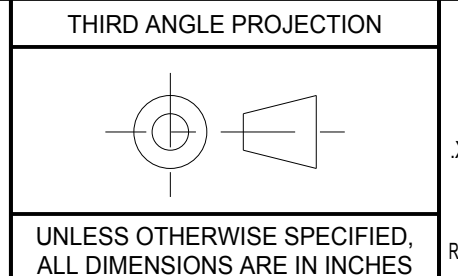
D
C
B
A

D
C
B
A



ECN# _____ UNLESS OTHERWISE SPECIFIED, ALL DIMENSIONS IN BRACKETS [] ARE INCHES. _____ PATTERN NO.

THIS DOCUMENT IS THE SOLE PROPERTY OF ITT CORPORATION, OR ITS SUBSIDIARY, AND IS PROVIDED SUBJECT TO RETURN. IT IS ISSUED IN STRICT CONFIDENCE AND SHALL NOT BE REPRODUCED, OR COPIED, OR DISCLOSED IN WHOLE OR IN PART, OR USED AS THE BASIS FOR THE MANUFACTURE OR SALES OF APPARATUS OR PARTS TO WHICH THE DOCUMENT RELATES, WITHOUT THE EXPRESS WRITTEN CONSENT OF ITT CORPORATION, OR ITS SUBSIDIARY. THIS LEGEND SHALL BE MARKED ON ANY REPRODUCTION HEREOF, IN WHOLE OR IN PART. ALL RIGHTS TO THE INFORMATION AND DESIGN DISCLOSED HEREIN ARE RESERVED TO ITT CORPORATION, OR ITS SUBSIDIARY.



UNLESS OTHERWISE NOTED

INCH	MM
X = ±0.06	[X] = ±[76]
.X = ±0.03	[.X] = ±[5]
.XX = ±0.02	[.XX] = ±[12]
.XXX = ±0.005	
XX = ±1/16	
X' = ±.5°	X' = ±.5°
X* = ±1°	X* = ±1°

REMOVE ALL BURRS AND SHARP EDGES. MACHINED SURFACES TO BE FINISHED EXCEPT AS NOTED.

WEIGHT	SCALE
-	1.000
DATE	BY
DWN 08-May-12	P.N.
CHKD 08-May-12	S.P.
APVD 08-May-12	S.P.

SAMPLE VALVE ASSEMBLY
TC X (HB/TC/BW)
ANSI
00.25 TO 03.00
SUPERSEDES: -

ITT LANCASTER, PA USA

SIZE	DRAWING NUMBER	SHEET	REV
D	K17431	2 OF 2	A

LV_D 09/01/09 8 7 6 5 4 3 2 1