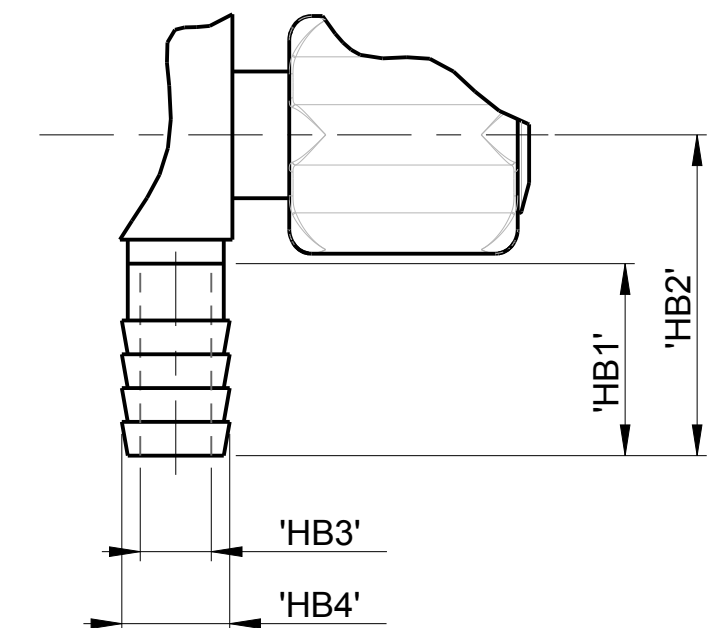
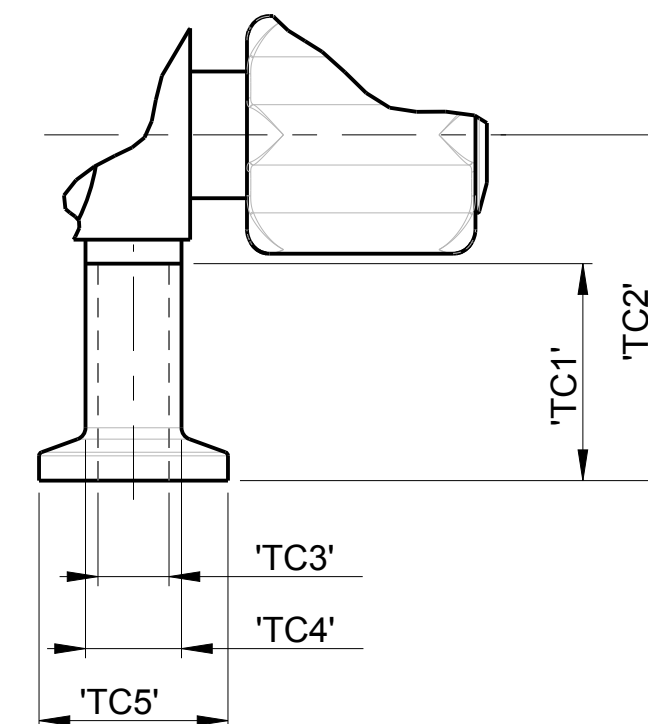
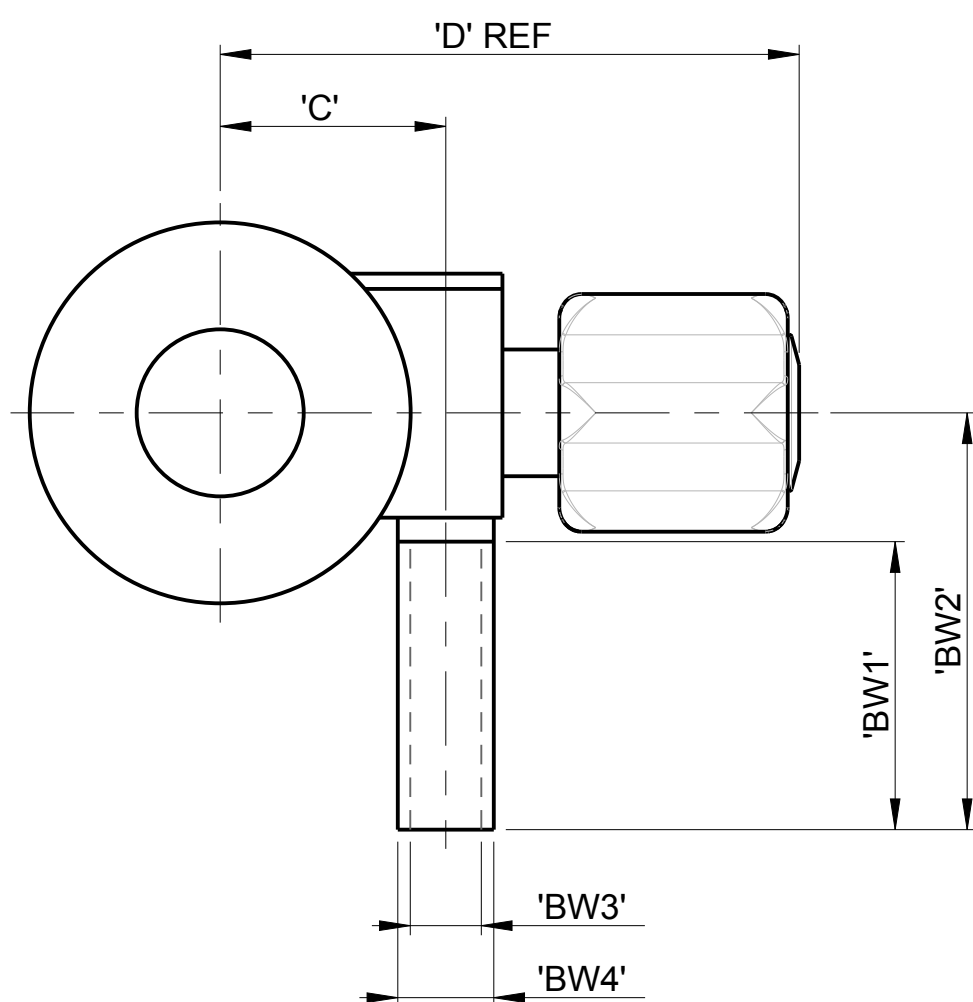
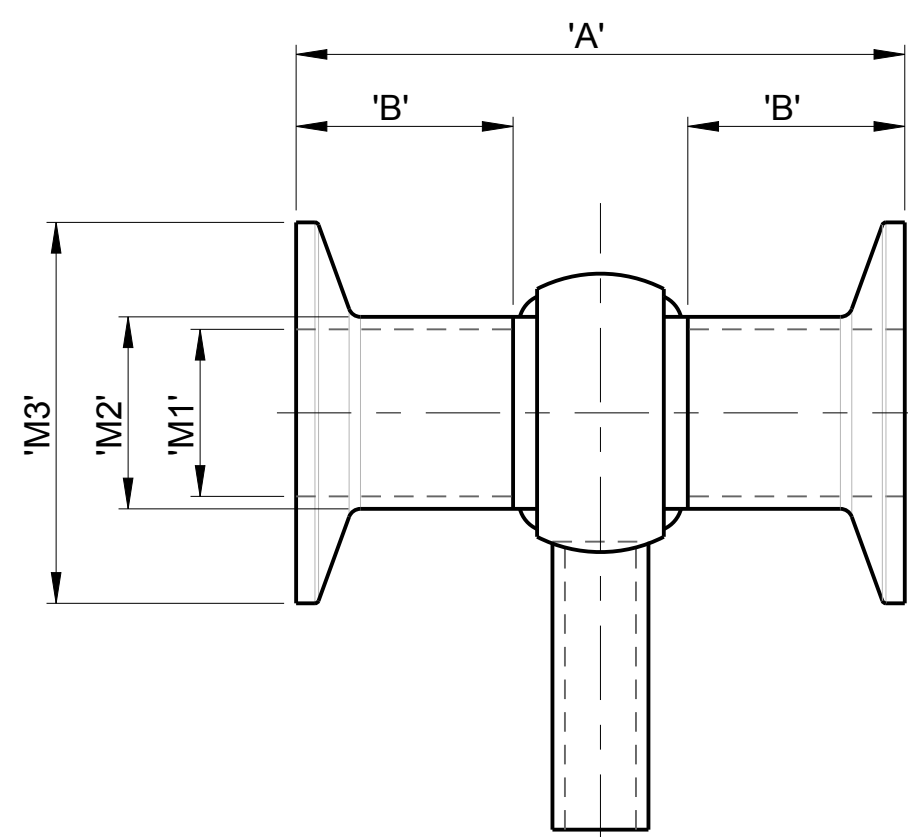


8	7				6			5				4		3			2				1						
	DESCRIPTION	'A'	'B'	'C'	'D' REF	'M1'	'M2'	'M3'	BUTT WELD OUTLET				FERRULE OUTLET					HOSEBARB OUTLET									
									'BW1'	'BW2'	'BW3'	'BW4'	'TC1'	'TC2'	'TC3'	'TC4'	'TC5'	'HB1'	'HB2'	'HB3'	'HB4'						
FOR 00.50 MAINLINE																											
	00.50-16GA X 00.125	48,50 [1.910]	12,70 [0.500]	25,91 [1.020]	71 [2.8]	9,40 [0.370]	12,70 [0.500]	24,99 [0.984]	-	-	-	-	-	-	-	-	-	22,10 [0.870]	36,35 [1.431]	2,00 [0.079]	3,80 [0.150]						
	00.50-16GA X 00.25-20GA			4,57 [0.180]					6,35 [0.250]	4,57 [0.180]	6,35 [0.250]	4,57 [0.180]	6,35 [0.250]	4,57 [0.180]	6,35 [0.250]	4,57 [0.180]	6,35 [0.250]	4,57 [0.180]	6,35 [0.250]	4,57 [0.180]	6,35 [0.250]	4,57 [0.180]	6,35 [0.250]	4,57 [0.180]	6,35 [0.250]	4,57 [0.180]	6,35 [0.250]
	00.50-16GA X 00.25-18GA			3,87 [0.152]					9,53 [0.375]	3,87 [0.152]	9,53 [0.375]	3,87 [0.152]	9,53 [0.375]	3,87 [0.152]	9,53 [0.375]	3,87 [0.152]	9,53 [0.375]	3,87 [0.152]	9,53 [0.375]	3,87 [0.152]	9,53 [0.375]	3,87 [0.152]	9,53 [0.375]	3,87 [0.152]	9,53 [0.375]	3,87 [0.152]	9,53 [0.375]
	00.50-16GA X 00.38-20GA			7,75 [0.305]					9,53 [0.375]	7,75 [0.305]	9,53 [0.375]	7,75 [0.305]	9,53 [0.375]	7,75 [0.305]	9,53 [0.375]	7,75 [0.305]	9,53 [0.375]	7,75 [0.305]	9,53 [0.375]	7,75 [0.305]	9,53 [0.375]	7,75 [0.305]	9,53 [0.375]	7,75 [0.305]	9,53 [0.375]	7,75 [0.305]	9,53 [0.375]
	00.50-16GA X 00.38-18GA			7,05 [0.278]					9,53 [0.375]	7,05 [0.278]	9,53 [0.375]	7,05 [0.278]	9,53 [0.375]	7,05 [0.278]	9,53 [0.375]	7,05 [0.278]	9,53 [0.375]	7,05 [0.278]	9,53 [0.375]	7,05 [0.278]	9,53 [0.375]	7,05 [0.278]	9,53 [0.375]	7,05 [0.278]	9,53 [0.375]	7,05 [0.278]	9,53 [0.375]
	00.50-16GA X 00.50-16GA			9,40 [0.370]					12,70 [0.500]	9,40 [0.370]	12,70 [0.500]	9,40 [0.370]	12,70 [0.500]	9,40 [0.370]	12,70 [0.500]	9,40 [0.370]	12,70 [0.500]	9,40 [0.370]	12,70 [0.500]	9,40 [0.370]	12,70 [0.500]	9,40 [0.370]	12,70 [0.500]	9,40 [0.370]	12,70 [0.500]	9,40 [0.370]	12,70 [0.500]
FOR 00.75 MAINLINE																											
	00.75-16GA X 00.125	48,50 [1.910]	12,70 [0.500]	29,08 [1.145]	74 [2.9]	15,75 [0.620]	19,05 [0.750]	24,99 [0.984]	-	-	-	-	-	-	-	-	-	22,10 [0.870]	36,35 [1.431]	2,00 [0.079]	3,80 [0.150]						
	00.75-16GA X 00.25-20GA			4,57 [0.180]					6,35 [0.250]	4,57 [0.180]	6,35 [0.250]	4,57 [0.180]	6,35 [0.250]	4,57 [0.180]	6,35 [0.250]	4,57 [0.180]	6,35 [0.250]	4,57 [0.180]	6,35 [0.250]	4,57 [0.180]	6,35 [0.250]	4,57 [0.180]	6,35 [0.250]	4,57 [0.180]	6,35 [0.250]	4,57 [0.180]	6,35 [0.250]
	00.75-16GA X 00.25-18GA			3,87 [0.152]					9,53 [0.375]	3,87 [0.152]	9,53 [0.375]	3,87 [0.152]	9,53 [0.375]	3,87 [0.152]	9,53 [0.375]	3,87 [0.152]	9,53 [0.375]	3,87 [0.152]	9,53 [0.375]	3,87 [0.152]	9,53 [0.375]	3,87 [0.152]	9,53 [0.375]	3,87 [0.152]	9,53 [0.375]	3,87 [0.152]	9,53 [0.375]
	00.75-16GA X 00.38-20GA			7,75 [0.305]					9,53 [0.375]	7,75 [0.305]	9,53 [0.375]	7,75 [0.305]	9,53 [0.375]	7,75 [0.305]	9,53 [0.375]	7,75 [0.305]	9,53 [0.375]	7,75 [0.305]	9,53 [0.375]	7,75 [0.305]	9,53 [0.375]	7,75 [0.305]	9,53 [0.375]	7,75 [0.305]	9,53 [0.375]	7,75 [0.305]	9,53 [0.375]
	00.75-16GA X 00.38-18GA			7,05 [0.278]					9,53 [0.375]	7,05 [0.278]	9,53 [0.375]	7,05 [0.278]	9,53 [0.375]	7,05 [0.278]	9,53 [0.375]	7,05 [0.278]	9,53 [0.375]	7,05 [0.278]	9,53 [0.375]	7,05 [0.278]	9,53 [0.375]	7,05 [0.278]	9,53 [0.375]	7,05 [0.278]	9,53 [0.375]	7,05 [0.278]	9,53 [0.375]
	00.75-16GA X 00.50-16GA			9,40 [0.370]					12,70 [0.500]	9,40 [0.370]	12,70 [0.500]	9,40 [0.370]	12,70 [0.500]	9,40 [0.370]	12,70 [0.500]	9,40 [0.370]	12,70 [0.500]	9,40 [0.370]	12,70 [0.500]	9,40 [0.370]	12,70 [0.500]	9,40 [0.370]	12,70 [0.500]	9,40 [0.370]	12,70 [0.500]	9,40 [0.370]	12,70 [0.500]
FOR 01.00 MAINLINE																											
	01.00-16GA X 00.125	80,50 [3.170]	28,70 [1.230]	32,26 [1.270]	77 [3.0]	22,10 [0.870]	25,40 [1.000]	50,39 [1.984]	-	-	-	-	-	-	-	-	-	22,10 [0.870]	39,14 [1.541]	2,00 [0.079]	3,80 [0.150]						
	01.00-16GA X 00.25-20GA			4,57 [0.180]					6,35 [0.250]	4,57 [0.180]	6,35 [0.250]	4,57 [0.180]	6,35 [0.250]	4,57 [0.180]	6,35 [0.250]	4,57 [0.180]	6,35 [0.250]	4,57 [0.180]	6,35 [0.250]	4,57 [0.180]	6,35 [0.250]	4,57 [0.180]	6,35 [0.250]	4,57 [0.180]	6,35 [0.250]	4,57 [0.180]	6,35 [0.250]
	01.00-16GA X 00.25-18GA			3,87 [0.152]					9,53 [0.375]	3,87 [0.152]	9,53 [0.375]	3,87 [0.152]	9,53 [0.375]	3,87 [0.152]	9,53 [0.375]	3,87 [0.152]	9,53 [0.375]	3,87 [0.152]	9,53 [0.375]	3,87 [0.152]	9,53 [0.375]	3,87 [0.152]	9,53 [0.375]	3,87 [0.152]	9,53 [0.375]	3,87 [0.152]	9,53 [0.375]
	01.00-16GA X 00.38-20GA			7,75 [0.305]					9,53 [0.375]	7,75 [0.305]	9,53 [0.375]	7,75 [0.305]	9,53 [0.375]	7,75 [0.305]	9,53 [0.375]	7,75 [0.305]	9,53 [0.375]	7,75 [0.305]	9,53 [0.375]	7,75 [0.305]	9,53 [0.375]	7,75 [0.305]	9,53 [0.375]	7,75 [0.305]	9,53 [0.375]	7,75 [0.305]	9,53 [0.375]
	01.00-16GA X 00.38-18GA			7,05 [0.278]					9,53 [0.375]	7,05 [0.278]	9,53 [0.375]	7,05 [0.278]	9,53 [0.375]	7,05 [0.278]	9,53 [0.375]	7,05 [0.278]	9,53 [0.375]	7,05 [0.278]	9,53 [0.375]	7,05 [0.278]	9,53 [0.375]	7,05 [0.278]	9,53 [0.375]	7,05 [0.278]	9,53 [0.375]	7,05 [0.278]	9,53 [0.375]
	01.00-16GA X 00.50-16GA			9,40 [0.370]					12,70 [0.500]	9,40 [0.370]	12,70 [0.500]	9,40 [0.370]	12,70 [0.500]	9,40 [0.370]	12,70 [0.500]	9,40 [0.370]	12,70 [0.500]	9,40 [0.370]	12,70 [0.500]	9,40 [0.370]	12,70 [0.500]	9,40 [0.370]	12,70 [0.500]	9,40 [0.370]	12,70 [0.500]	9,40 [0.370]	12,70 [0.500]
FOR 01.50 MAINLINE																											
	01.50-16GA X 00.125	80,50 [3.170]	28,70 [1.230]	38,61 [1.520]	83 [3.3]	34,80 [1.370]	38,10 [1.500]	50,39 [1.984]	-	-	-	-	-	-	-	-	-	22,10 [0.870]	44,86 [1.766]	2,00 [0.079]	3,80 [0.150]						
	01.50-16GA X 00.25-20GA			4,57 [0.180]					6,35 [0.250]	4,57 [0.180]	6,35 [0.250]	4,57 [0.180]	6,35 [0.250]	4,57 [0.180]	6,35 [0.250]	4,57 [0.180]	6,35 [0.250]	4,57 [0.180]	6,35 [0.250]	4,57 [0.180]	6,35 [0.250]	4,57 [0.180]	6,35 [0.250]	4,57 [0.180]	6,35 [0.250]	4,57 [0.180]	6,35 [0.250]
	01.50-16GA X 00.25-18GA			3,87 [0.152]					9,53 [0.375]	3,87 [0.152]	9,53 [0.375]	3,87 [0.152]	9,53 [0.375]	3,87 [0.152]	9,53 [0.375]	3,87 [0.152]	9,53 [0.375]	3,87 [0.152]	9,53 [0.375]	3,87 [0.152]	9,53 [0.375]	3,87 [0.152]	9,53 [0.375]	3,87 [0.152]	9,53 [0.375]	3,87 [0.152]	9,53 [0.375]
	01.50-16GA X 00.38-20GA			7,75 [0.305]					9,53 [0.375]	7,75 [0.305]	9,53 [0.375]	7,75 [0.305]	9,53 [0.375]	7,75 [0.305]	9,53 [0.375]	7,75 [0.305]	9,53 [0.375]	7,75 [0.305]	9,53 [0.375]	7,75 [0.305]	9,53 [0.375]	7,75 [0.305]	9,53 [0.375]	7,75 [0.305]	9,53 [0.375]	7,75 [0.305]	9,53 [0.375]
	01.50-16GA X 00.38-18GA			7,05 [0.278]					9,53 [0.375]	7,05 [0.278]	9,53 [0.375]	7,05 [0.278]	9,53 [0.375]	7,05 [0.278]	9,53 [0.375]	7,05 [0.278]	9,53 [0.375]	7,05 [0.278]	9,53 [0.375]	7,05 [0.278]	9,53 [0.375]	7,05 [0.278]	9,53 [0.375]	7,05 [0.278]	9,53 [0.375]	7,05 [0.278]	9,53 [0.375]
	01.50-16GA X 00.50-16GA			9,40 [0.370]					12,70 [0.500]	9,40 [0.370]	12,70 [0.500]	9,40 [0.370]	12,70 [0.500]	9,40 [0.370]	12,70 [0.500]	9,40 [0.370]	12,70 [0.500]	9,40 [0.370]	12,70 [0.500]	9,40 [0.370]	12,70 [0.500]	9,40 [0.370]	12,70 [0.500]	9,40 [0.370]	12,70 [0.500]	9,40 [0.370]	12,70 [0.500]
FOR 02.00 MAINLINE																											
	02.00-16GA X 00.125	80,50 [3.170]	28,70 [1.230]	44,96 [1.770]	90 [3.5]	47,50 [1.870]	50,80 [2.000]	63,91 [2.516]	-	-	-	-	-	-	-	-	-	22,10 [0.870]	51,44 [2.025]	2,00 [0.079]	3,80 [0.150]						
	02.00-16GA X 00.25-20GA			4,57 [0.180]					6,35 [0.250]	4,57 [0.180]	6,35 [0.250]	4,57 [0.180]	6,35 [0.250]	4,57 [0.180]	6,35 [0.250]	4,57 [0.180]	6,35 [0.250]	4,57 [0.180]	6,35 [0.250]	4,57 [0.180]	6,35 [0.250]	4,57 [0.180]	6,35 [0.250]	4,57 [0.180]	6,35 [0.250]	4,57 [0.180]	6,35 [0.250]
	02.00-16GA X 00.25-18GA			3,87 [0.152]					9,53 [0.375]	3,87 [0.152]	9,53 [0.375]	3,87 [0.152]	9,53 [0.375]	3,87 [0.152]	9,53 [0.375]	3,87 [0.152]	9,53 [0.375]	3,87 [0.152]	9,53 [0.375]	3,87 [0.152]	9,53 [0.375]	3,87 [0.152]	9,53 [0.375]	3,87 [0.152]	9,53 [0.375]	3,87 [0.152]	9,53 [0.375]
	02.00-16GA X 00.38-20GA			7,75 [0.305]					9,53 [0.375]	7,75 [0.305]	9,53 [0.375]	7,75 [0.305]	9,53 [0.375]	7,75 [0.305]	9,53 [0.375]	7,75 [0.305]	9,53 [0.375]	7,75 [0.305]	9,53 [0.375]	7,75 [0.305]	9,53 [0.375]	7,75 [0.305]	9,53 [0.375]	7,75 [0.305]	9,53 [0.375]	7,75 [0.305]	9,53 [0.375]
	02.00-16GA X 00.38-18GA			7,05 [0.278]					9,53 [0.375]	7,05 [0.278]	9,53 [0.375]	7,05 [0.278]	9,53 [0.375]	7,05 [0.278]	9,53 [0.375]	7,05 [0.278]	9,53 [0.375]	7,05 [0.278]	9,53 [0.375]	7,05 [0.278]	9,53 [0.375]	7,05 [0.278]	9,53 [0.375]	7,05 [0.278]	9,53 [0.375]	7,05 [0.278]	9,53 [0.375]
	02.00-16GA X 00.50-16GA			9,40 [0.370]					12,70 [0.500]	9,40 [0.370]	12,70 [0.500]	9,40 [0.370]	12,70 [0.500]	9,40 [0.370]	12,70 [0.500]	9,40 [0.370]	12,70 [0.500]	9,40 [0.370]	12,70 [0.500]	9,40 [0.370]	12,70 [0.500]	9,40 [0.370]	12,70 [0.500]	9,40 [0.370]	12,70 [0.500]	9,40 [0.370]	12,70 [0.500]

- NOTES:
- INTERNAL SURFACE 0.3 μm Ra [11 μ-in Ra]
 - EXTERNAL 1.6 μm Ra [64 μ-in Ra]
 - FOR 3.175 [0.125] OUTLET USE 6.35 [0.25] PORT, OUTLET USES A REDUCER.

FOR 0.50" TO 2.00" RUN SIZE ZERO STATIC SAMPLE VALVES (TC RUN END CONNECTIONS)

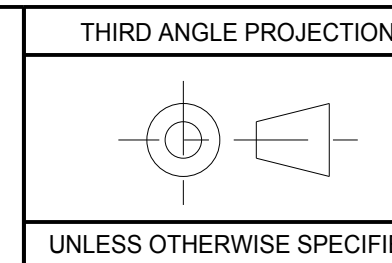


ECN# 12623

UNLESS OTHERWISE SPECIFIED, ALL DIMENSIONS IN BRACKETS [] ARE INCHES.

PATTERN NO.

THIS DOCUMENT IS THE SOLE PROPERTY OF ITT CORPORATION, OR ITS SUBSIDIARY, AND IS PROVIDED SUBJECT TO RETURN. IT IS ISSUED IN STRICT CONFIDENCE AND SHALL NOT BE REPRODUCED, OR COPIED, OR DISCLOSED IN WHOLE OR IN PART, OR USED AS THE BASIS FOR THE MANUFACTURE OR SALES OF APPARATUS OR PARTS TO WHICH THE DOCUMENT RELATES, WITHOUT THE EXPRESS WRITTEN CONSENT OF ITT CORPORATION, OR ITS SUBSIDIARY. THIS LEGEND SHALL BE MARKED ON ANY REPRODUCTION HEREOF, IN WHOLE OR IN PART. ALL RIGHTS TO THE INFORMATION AND DESIGN DISCLOSED HEREIN ARE RESERVED TO ITT CORPORATION, OR ITS SUBSIDIARY.



UNLESS OTHERWISE NOTED
INCH
X = ± 0.06
X = ± 0.03
XX = ± 0.02
XXX = ± 0.005
XXX = ± 1/16
X' = ± 5°
X' = ± 5°
X' = ± 1°
REMOVE ALL BURRS AND SHARP EDGES. MACHINED SURFACES TO BE EXCEPT AS NOTED.

WEIGHT
SCALE
1.000
DATE
BY
DWN
16-Jul-12
P.N.
CHKD
16-Jul-12
S.P.
APVD
16-Jul-12
S.P.

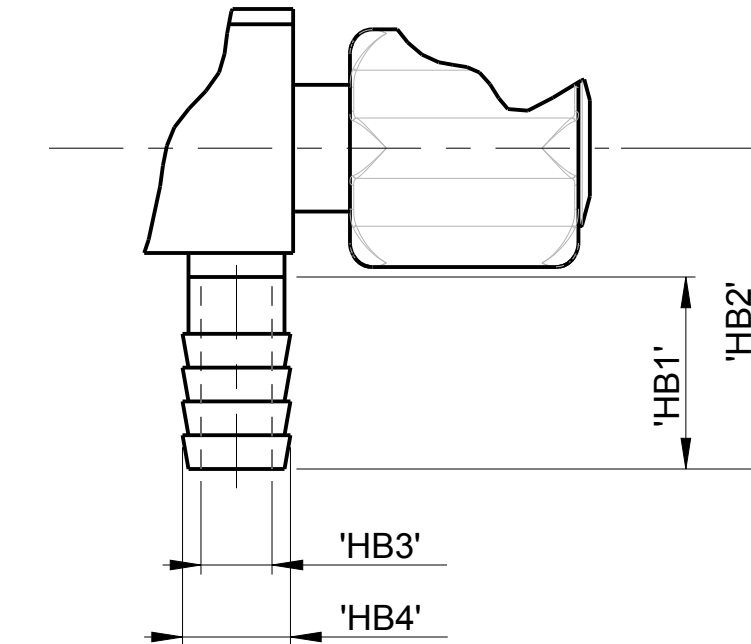
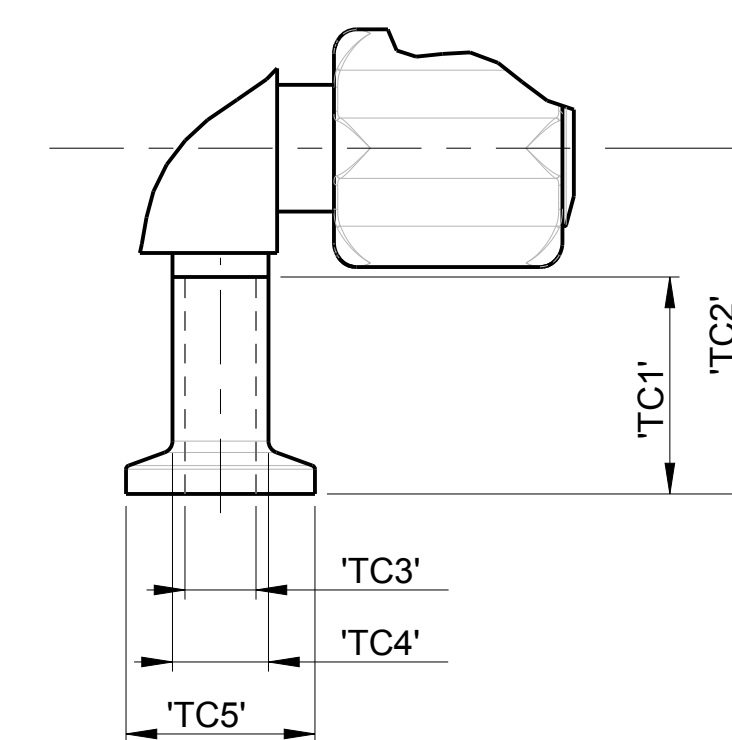
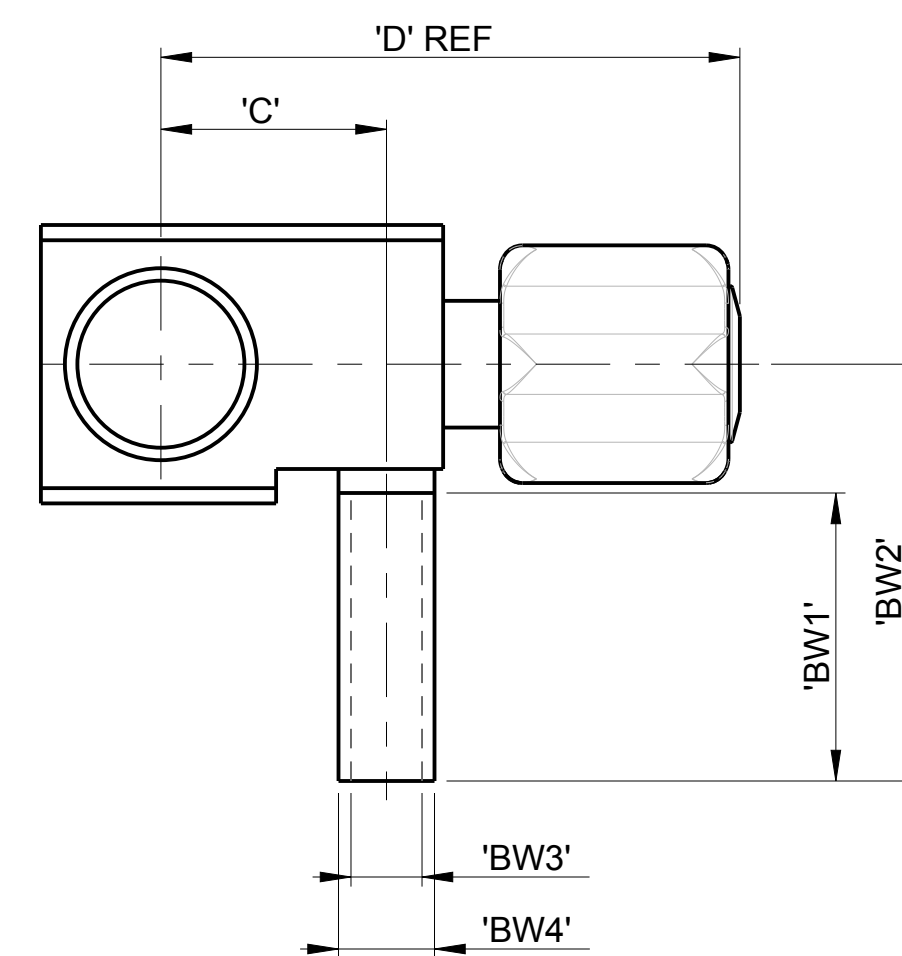
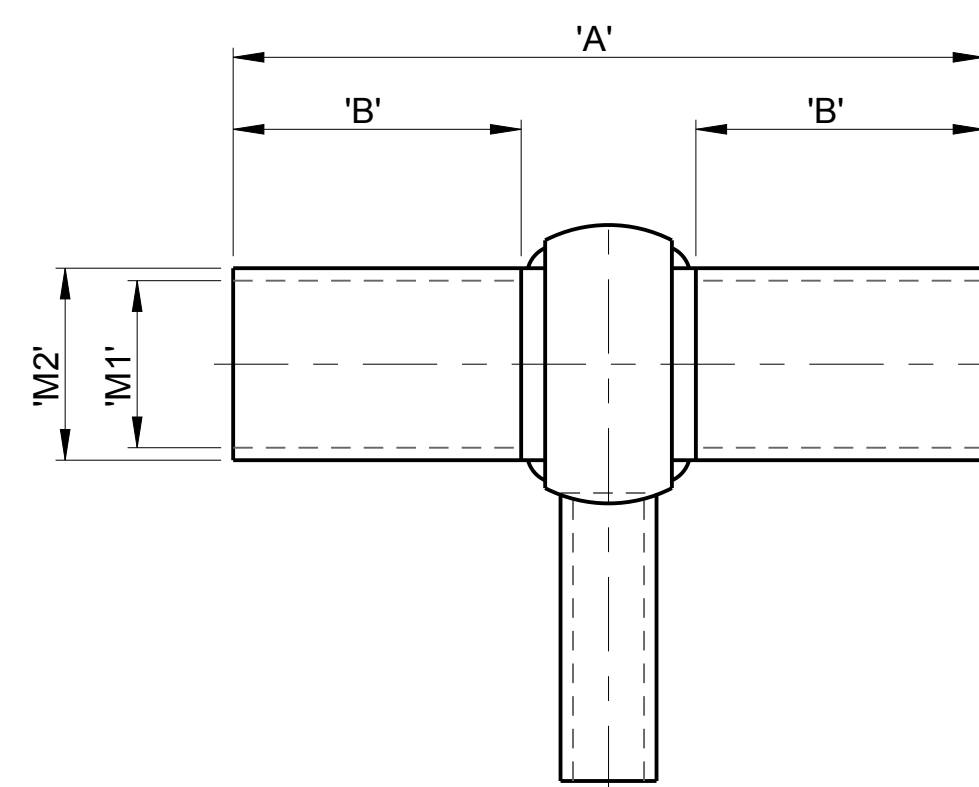
ZERO STATIC
SAMPLE VALVE
ASSEMBLY
ANSI
00.50" to 02.00"
SUPERSEDES: -

ITT
LANCASTER, PA USA
SIZE
DRAWING NUMBER
SHEET
REV

8	7			6				5				4		3			2				1
	DESCRIPTION	'A'	'B'	'C'	'D' REF	'M1'	'M2'	'M3'	BUTT WELD OUTLET				FERRULE OUTLET					HOSEBARB OUTLET			
								'BW1'	'BW2'	'BW3'	'BW4'	'TC1'	'TC2'	'TC3'	'TC4'	'TC5'	'HB1'	'HB2'	'HB3'	'HB4'	
FOR 00.50 MAINLINE																					
	00.50-16GA X 00.125	99,31 [3.910]	38,10 [1.500]	25,91 [1.020]	71 [2.8]	9,40 [0.370]	12,70 [0.500]	24,99 [0.984]	-	-	-	-	-	-	-	-	22,10 [0.870]	36,35 [1.431]	2,00 [0.079]	3,80 [0.150]	
	00.50-16GA X 00.25-20GA			4,57 [0.180]					6,35 [0.250]	4,57 [0.180]	6,35 [0.250]	4,57 [0.180]	6,35 [0.250]	4,57 [0.180]	6,35 [0.250]						
	00.50-16GA X 00.25-18GA			3,87 [0.152]					6,35 [0.250]	3,87 [0.152]	6,35 [0.250]	3,87 [0.152]	6,35 [0.250]	3,87 [0.152]	6,35 [0.250]						
	00.50-16GA X 00.38-20GA			7,75 [0.305]					9,53 [0.375]	7,75 [0.305]	9,53 [0.375]	7,75 [0.305]	9,53 [0.375]	7,75 [0.305]	9,53 [0.375]						
	00.50-16GA X 00.38-18GA			7,05 [0.278]					9,53 [0.375]	7,05 [0.278]	9,53 [0.375]	7,05 [0.278]	9,53 [0.375]	7,05 [0.278]	9,53 [0.375]						
	00.50-16GA X 00.50-16GA			9,40 [0.370]					12,70 [0.500]	9,40 [0.370]	12,70 [0.500]	9,40 [0.370]	12,70 [0.500]	9,40 [0.370]	12,70 [0.500]						
FOR 00.75 MAINLINE																					
	00.75-16GA X 00.125	99,31 [3.910]	38,10 [1.500]	29,08 [1.145]	74 [2.9]	15,75 [0.620]	19,05 [0.750]	24,99 [0.984]	-	-	-	-	-	-	-	-	22,10 [0.870]	36,35 [1.431]	2,00 [0.079]	3,80 [0.150]	
	00.75-16GA X 00.25-20GA			4,57 [0.180]					6,35 [0.250]	4,57 [0.180]	6,35 [0.250]	4,57 [0.180]	6,35 [0.250]	4,57 [0.180]	6,35 [0.250]						
	00.75-16GA X 00.25-18GA			3,87 [0.152]					6,35 [0.250]	3,87 [0.152]	6,35 [0.250]	3,87 [0.152]	6,35 [0.250]	3,87 [0.152]	6,35 [0.250]						
	00.75-16GA X 00.38-20GA			7,75 [0.305]					9,53 [0.375]	7,75 [0.305]	9,53 [0.375]	7,75 [0.305]	9,53 [0.375]	7,75 [0.305]	9,53 [0.375]						
	00.75-16GA X 00.38-18GA			7,05 [0.278]					9,53 [0.375]	7,05 [0.278]	9,53 [0.375]	7,05 [0.278]	9,53 [0.375]	7,05 [0.278]	9,53 [0.375]						
	00.75-16GA X 00.50-16GA			9,40 [0.370]					12,70 [0.500]	9,40 [0.370]	12,70 [0.500]	9,40 [0.370]	12,70 [0.500]	9,40 [0.370]	12,70 [0.500]						
FOR 01.00 MAINLINE																					
	01.00-16GA X 00.125	99,31 [3.910]	38,10 [1.500]	32,26 [1.270]	77 [3,0]	22,10 [0.870]	25,40 [1.000]	50,39 [1.984]	-	-	-	-	-	-	-	-	22,10 [0.870]	39,14 [1.541]	2,00 [0.079]	3,80 [0.150]	
	01.00-16GA X 00.25-20GA			4,57 [0.180]					6,35 [0.250]	4,57 [0.180]	6,35 [0.250]	4,57 [0.180]	6,35 [0.250]	4,57 [0.180]	6,35 [0.250]						
	01.00-16GA X 00.25-18GA			3,87 [0.152]					6,35 [0.250]	3,87 [0.152]	6,35 [0.250]	3,87 [0.152]	6,35 [0.250]	3,87 [0.152]	6,35 [0.250]						
	01.00-16GA X 00.38-20GA			7,75 [0.305]					9,53 [0.375]	7,75 [0.305]	9,53 [0.375]	7,75 [0.305]	9,53 [0.375]	7,75 [0.305]	9,53 [0.375]						
	01.00-16GA X 00.38-18GA			7,05 [0.278]					9,53 [0.375]	7,05 [0.278]	9,53 [0.375]	7,05 [0.278]	9,53 [0.375]	7,05 [0.278]	9,53 [0.375]						
	01.00-16GA X 00.50-16GA			9,40 [0.370]					12,70 [0.500]	9,40 [0.370]	12,70 [0.500]	9,40 [0.370]	12,70 [0.500]	9,40 [0.370]	12,70 [0.500]						
FOR 01.50 MAINLINE																					
	01.50-16GA X 00.125	99,31 [3.910]	38,10 [1.500]	38,61 [1.520]	83 [3.3]	34,80 [1.370]	38,10 [1.500]	50,39 [1.984]	-	-	-	-	-	-	-	-	22,10 [0.870]	44,86 [1.766]	2,00 [0.079]	3,80 [0.150]	
	01.50-16GA X 00.25-20GA			4,57 [0.180]					6,35 [0.250]	4,57 [0.180]	6,35 [0.250]	4,57 [0.180]	6,35 [0.250]	4,57 [0.180]	6,35 [0.250]						
	01.50-16GA X 00.25-18GA			3,87 [0.152]					6,35 [0.250]	3,87 [0.152]	6,35 [0.250]	3,87 [0.152]	6,35 [0.250]	3,87 [0.152]	6,35 [0.250]						
	01.50-16GA X 00.38-20GA			7,75 [0.305]					9,53 [0.375]	7,75 [0.305]	9,53 [0.375]	7,75 [0.305]	9,53 [0.375]	7,75 [0.305]	9,53 [0.375]						
	01.50-16GA X 00.38-18GA			7,05 [0.278]					9,53 [0.375]	7,05 [0.278]	9,53 [0.375]	7,05 [0.278]	9,53 [0.375]	7,05 [0.278]	9,53 [0.375]						
	01.50-16GA X 00.50-16GA			9,40 [0.370]					12,70 [0.500]	9,40 [0.370]	12,70 [0.500]	9,40 [0.370]	12,70 [0.500]	9,40 [0.370]	12,70 [0.500]						
FOR 02.00 MAINLINE																					
	02.00-16GA X 00.125	112,01 [4.410]	44,45 [1.750]	44,96 [1.770]	90 [3.5]	47,50 [1.870]	50,80 [2.000]	63,91 [2.516]	-	-	-	-	-	-	-	-	22,10 [0.870]	51,44 [2.025]	2,00 [0.079]	3,80 [0.150]	
	02.00-16GA X 00.25-20GA			4,57 [0.180]					6,35 [0.250]	4,57 [0.180]	6,35 [0.250]	4,57 [0.180]	6,35 [0.250]	4,57 [0.180]	6,35 [0.250]						
	02.00-16GA X 00.25-18GA			3,87 [0.152]					6,35 [0.250]	3,87 [0.152]	6,35 [0.250]	3,87 [0.152]	6,35 [0.250]	3,87 [0.152]	6,35 [0.250]						
	02.00-16GA X 00.38-20GA			7,75 [0.305]					9,53 [0.375]	7,75 [0.305]	9,53 [0.375]	7,75 [0.305]	9,53 [0.375]	7,75 [0.305]	9,53 [0.375]						
	02.00-16GA X 00.38-18GA			7,05 [0.278]					9,53 [0.375]	7,05 [0.278]	9,53 [0.375]	7,05 [0.278]	9,53 [0.375]	7,05 [0.278]	9,53 [0.375]						
	02.00-16GA X 00.50-16GA			9,40 [0.370]					12,70 [0.500]	9,40 [0.370]	12,70 [0.500]	9,40 [0.370]	12,70 [0.500]	9,40 [0.370]	12,70 [0.500]						

- NOTES:
- INTERNAL SURFACE 0.3 µm Ra [11 µ-in Ra]
 - EXTERNAL 1.6 µm Ra [64 µ-in Ra]
 - FOR 3,175 [0.125] OUTLET USE 6,35 [0.25] PORT, OUTLET USES A REDUCER.

FOR 0.50" TO 2.00" RUN SIZE ZERO STATIC SAMPLE VALVES (BW RUN END CONNECTIONS)

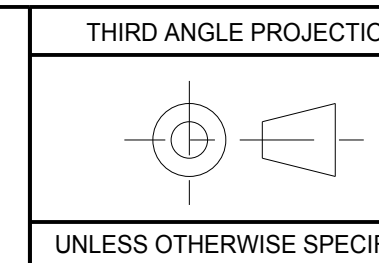


ECN# 12623

UNLESS OTHERWISE SPECIFIED, ALL DIMENSIONS IN BRACKETS [] ARE INCHES.

PATTERN NO.

THIS DOCUMENT IS THE SOLE PROPERTY OF ITT CORPORATION, OR ITS SUBSIDIARY, AND IS PROVIDED SUBJECT TO RETURN. IT IS ISSUED IN STRICT CONFIDENCE AND SHALL NOT BE REPRODUCED, OR COPIED, OR DISCLOSED IN WHOLE OR IN PART, OR USED AS THE BASIS FOR THE MANUFACTURE OR SALES OF APPARATUS OR PARTS TO WHICH THE DOCUMENT RELATES, WITHOUT THE EXPRESS WRITTEN CONSENT OF ITT CORPORATION, OR ITS SUBSIDIARY. THIS LEGEND SHALL BE MARKED ON ANY REPRODUCTION HEREOF, IN WHOLE OR IN PART. ALL RIGHTS TO THE INFORMATION AND DESIGN DISCLOSED HEREIN ARE RESERVED TO ITT CORPORATION, OR ITS SUBSIDIARY.



UNLESS OTHERWISE NOTED
INCH
X = ± 0.06
.X = ± 0.03
.XX = ± 0.02
XXX = ± 0.005
X' = ± 5°
X'' = ± 1°

WEIGHT
SCALE
1.000

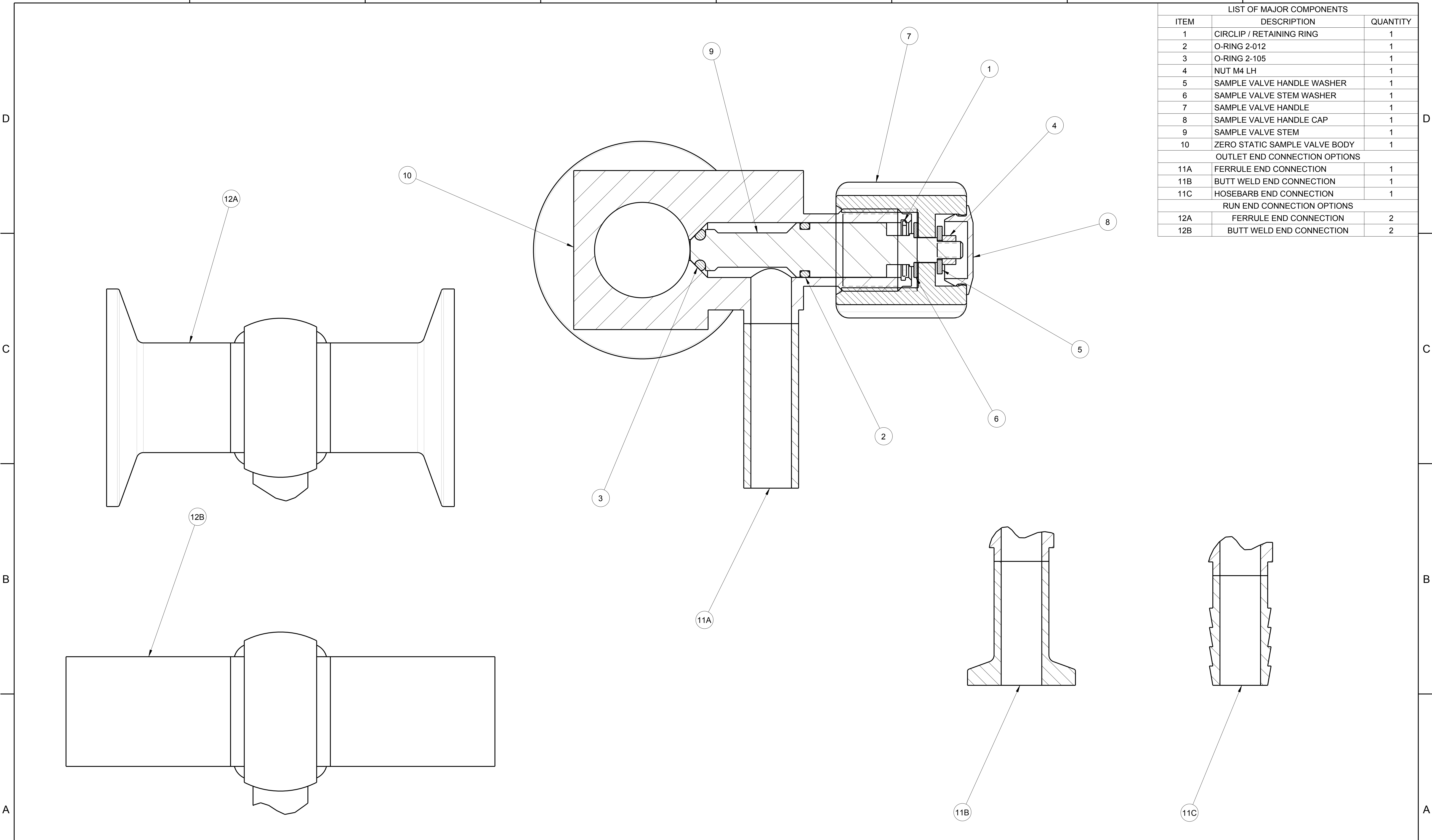
ZERO STATIC
SAMPLE VALVE
ASSEMBLY
ANSI
00.50" to 02.00"
SUPERSEDES: -

ITT LANCASTER, PA USA

D K17433 2 OF 3 -

8 7 6 5 4 3 2 1

LIST OF MAJOR COMPONENTS		
ITEM	DESCRIPTION	QUANTITY
1	CIRCLIP / RETAINING RING	1
2	O-RING 2-012	1
3	O-RING 2-105	1
4	NUT M4 LH	1
5	SAMPLE VALVE HANDLE WASHER	1
6	SAMPLE VALVE STEM WASHER	1
7	SAMPLE VALVE HANDLE	1
8	SAMPLE VALVE HANDLE CAP	1
9	SAMPLE VALVE STEM	1
10	ZERO STATIC SAMPLE VALVE BODY	1
OUTLET END CONNECTION OPTIONS		
11A	FERRULE END CONNECTION	1
11B	BUTT WELD END CONNECTION	1
11C	HOSEBARB END CONNECTION	1
RUN END CONNECTION OPTIONS		
12A	FERRULE END CONNECTION	2
12B	BUTT WELD END CONNECTION	2



ECN# 12623

UNLESS OTHERWISE SPECIFIED, ALL DIMENSIONS IN BRACKETS [] ARE INCHES.

PATTERN NO.

THIS DOCUMENT IS THE SOLE PROPERTY OF ITT CORPORATION, OR ITS SUBSIDIARY, AND IS PROVIDED SUBJECT TO RETURN. IT IS ISSUED IN STRICT CONFIDENCE AND SHALL NOT BE REPRODUCED, OR COPIED, OR DISCLOSED IN WHOLE OR IN PART, OR USED AS THE BASIS FOR THE MANUFACTURE OR SALES OF APPARATUS OR PARTS TO WHICH THE DOCUMENT RELATES, WITHOUT THE EXPRESS WRITTEN CONSENT OF ITT CORPORATION, OR ITS SUBSIDIARY. THIS LEGEND SHALL BE MARKED ON ANY REPRODUCTION HEREOF, IN WHOLE OR IN PART. ALL RIGHTS TO THE INFORMATION AND DESIGN DISCLOSED HEREIN ARE RESERVED TO ITT CORPORATION, OR ITS SUBSIDIARY.

THIRD ANGLE PROJECTION 	UNLESS OTHERWISE NOTED INCH X = ±0.06 .X = ±0.03 XX = ±0.02 XXX = ±0.005 X' = ±.1/16 X'' = ±.5"	MM [X] = ±[.76] [X'] = ±[.5] [XX] = ±[.12] X' = ±.5" X'' = ±1"	WEIGHT SCALE 1.000	ZERO STATIC SAMPLE VALVE ASSEMBLY ANSI 00.50" to 02.00" SUPERSEDES:-	ITT LANCASTER, PA USA SIZE D DRAWING NUMBER K17433 SHEET 3 OF 3 REV -				
	UNLESS OTHERWISE SPECIFIED, ALL DIMENSIONS ARE IN MM REMOVE ALL BURRS AND SHARP EDGES. MACHINED SURFACES TO BE EXCEPT AS NOTED.	<table border="1"> <tr> <th>DATE</th> <th>BY</th> </tr> <tr> <td>16-Jul-12</td> <td>P.N.</td> </tr> <tr> <td>16-Jul-12</td> <td>S.P.</td> </tr> <tr> <td>16-Jul-12</td> <td>S.P.</td> </tr> </table>	DATE	BY		16-Jul-12	P.N.	16-Jul-12	S.P.
DATE	BY								
16-Jul-12	P.N.								
16-Jul-12	S.P.								
16-Jul-12	S.P.								

8 7 6 5 4 3 2 1