

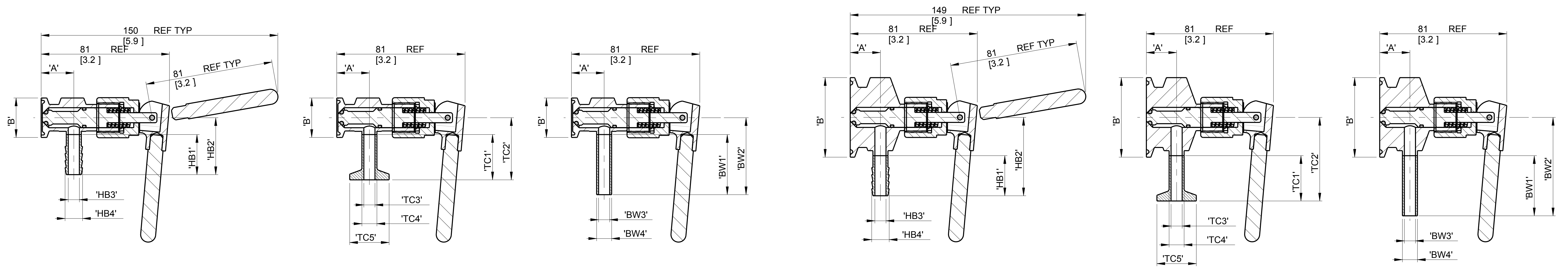
8	7	6	5	4	3	2	1												
								HOSEBARB OUTLET				FERRULE OUTLET					BUTT WELD OUTLET		
DESCRIPTION	'A'	'B'	'HB1'	'HB2'	'HB3'	'HB4'	'TC1'	'TC2'	'TC3'	'TC4'	'TC5'	'BW1'	'BW2'	'BW3'	'BW4'				
FOR 00.25 TO 00.75																			
00.25-00.75 X 00.125	22,33 [0.879]	24,99 [0.984]	22,10 [0.870]	32,77 [1.290]	2,00 [0.079]	3,80 [0.150]	-	-	-	-	-	-	-	-	-				
00.25-00.75 X 00.25-20GA			4,57 [0.180]	7,92 [0.312]	4,57 [0.180]	6,35 [0.250]	4,57 [0.180]	6,35 [0.250]	4,57 [0.180]	6,35 [0.250]									
00.25-00.75 X 00.25-18GA	20,73 [0.816]	24,99 [0.984]	25,40 [1.000]	36,07 [1.420]	7,75 [0.305]	11,10 [0.437]	28,70 [1.130]	39,37 [1.550]	7,75 [0.305]	9,53 [0.375]	24,99 [0.984]	38,10 [1.500]	48,77 [1.920]	3,87 [0.152]	4,57 [0.180]				
00.25-00.75 X 00.38-20GA														7,75 [0.305]	9,53 [0.375]	7,75 [0.305]	9,53 [0.375]	7,75 [0.305]	9,53 [0.375]
00.25-00.75 X 00.38-18GA														7,05 [0.278]	9,40 [0.370]	7,05 [0.278]	9,40 [0.370]	7,05 [0.278]	9,40 [0.370]
00.25-00.75 X 00.50-16GA	19,89 [0.783]				9,40 [0.370]	14,27 [0.562]			9,40 [0.370]	12,70 [0.500]				9,40 [0.370]	12,70 [0.500]				
FOR 01.00 TO 01.50																			
01.00-01.50 X 00.125	21,56 [0.849]	50,39 [1.984]	22,10 [0.870]	46,36 [1.825]	2,00 [0.079]	3,80 [0.150]	-	-	-	-	-	-	-	-	-				
01.00-01.50 X 00.25-20GA			4,57 [0.180]	7,92 [0.312]	4,57 [0.180]	6,35 [0.250]	4,57 [0.180]	6,35 [0.250]	4,57 [0.180]	6,35 [0.250]									
01.00-01.50 X 00.25-18GA	19,96 [0.786]	50,39 [1.984]	25,40 [1.000]	49,66 [1.955]	7,75 [0.305]	11,10 [0.437]	28,70 [1.130]	52,96 [2.085]	7,75 [0.305]	9,53 [0.375]	24,99 [0.984]	38,10 [1.500]	62,36 [2.455]	3,87 [0.152]	4,57 [0.180]				
01.00-01.50 X 00.38-20GA														7,75 [0.305]	9,53 [0.375]	7,75 [0.305]	9,53 [0.375]	7,75 [0.305]	9,53 [0.375]
01.00-01.50 X 00.38-18GA														7,05 [0.278]	9,40 [0.370]	7,05 [0.278]	9,40 [0.370]	7,05 [0.278]	9,40 [0.370]
01.00-01.50 X 00.50-16GA	19,13 [0.753]				9,40 [0.370]	14,27 [0.562]			9,40 [0.370]	12,70 [0.500]				9,40 [0.370]	12,70 [0.500]				
FOR 02.00																			
02.00 X 00.125	21,56 [0.849]	63,91 [2.516]	22,10 [0.870]	46,10 [1.815]	2,00 [0.079]	3,80 [0.150]	-	-	-	-	-	-	-	-	-				
02.00 X 00.25-20GA			4,57 [0.180]	7,92 [0.312]	4,57 [0.180]	6,35 [0.250]	4,57 [0.180]	6,35 [0.250]	4,57 [0.180]	6,35 [0.250]									
02.00 X 00.25-18GA	19,96 [0.786]	63,91 [2.516]	25,40 [1.000]	39,37 [1.550]	7,75 [0.305]	11,10 [0.437]	28,70 [1.130]	52,70 [2.075]	7,75 [0.305]	9,53 [0.375]	24,99 [0.984]	38,10 [1.500]	62,10 [2.445]	3,87 [0.152]	4,57 [0.180]				
02.00 X 00.38-20GA														7,75 [0.305]	9,53 [0.375]	7,75 [0.305]	9,53 [0.375]	7,75 [0.305]	9,53 [0.375]
02.00 X 00.38-18GA														7,05 [0.278]	9,40 [0.370]	7,05 [0.278]	9,40 [0.370]	7,05 [0.278]	9,40 [0.370]
02.00 X 00.50-16GA	19,13 [0.753]				9,40 [0.370]	14,27 [0.562]			9,40 [0.370]	12,70 [0.500]				9,40 [0.370]	12,70 [0.500]				
FOR 02.50																			
02.50 X 00.125	21,56 [0.849]	77,39 [3.047]	22,10 [0.870]	46,10 [1.815]	2,00 [0.079]	3,80 [0.150]	-	-	-	-	-	-	-	-	-				
02.50 X 00.25-20GA			4,57 [0.180]	7,92 [0.312]	4,57 [0.180]	6,35 [0.250]	4,57 [0.180]	6,35 [0.250]	4,57 [0.180]	6,35 [0.250]									
02.50 X 00.25-18GA	19,96 [0.786]	77,39 [3.047]	25,40 [1.000]	57,79 [2.275]	7,75 [0.305]	11,10 [0.437]	28,70 [1.130]	61,09 [2.405]	7,75 [0.305]	9,53 [0.375]	24,99 [0.984]	38,10 [1.500]	70,49 [2.775]	3,87 [0.152]	4,57 [0.180]				
02.50 X 00.38-20GA														7,75 [0.305]	9,53 [0.375]	7,75 [0.305]	9,53 [0.375]	7,75 [0.305]	9,53 [0.375]
02.50 X 00.38-18GA														7,05 [0.278]	9,40 [0.370]	7,05 [0.278]	9,40 [0.370]	7,05 [0.278]	9,40 [0.370]
02.50 X 00.50-16GA	19,13 [0.753]				9,40 [0.370]	14,27 [0.562]			9,40 [0.370]	12,70 [0.500]				9,40 [0.370]	12,70 [0.500]				
FOR 03.00																			
03.00 X 00.125	21,56 [0.849]	90,91 [3.579]	22,10 [0.870]	46,10 [1.815]	2,00 [0.079]	3,80 [0.150]	-	-	-	-	-	-	-	-	-				
03.00 X 00.25-20GA			4,57 [0.180]	7,92 [0.312]	4,57 [0.180]	6,35 [0.250]	4,57 [0.180]	6,35 [0.250]	4,57 [0.180]	6,35 [0.250]									
03.00 X 00.25-18GA	19,96 [0.786]	90,91 [3.579]	25,40 [1.000]	60,33 [2.375]	7,75 [0.305]	11,10 [0.437]	28,70 [1.130]	63,63 [2.505]	7,75 [0.305]	9,53 [0.375]	24,99 [0.984]	38,10 [1.500]	73,03 [2.875]	3,87 [0.152]	4,57 [0.180]				
03.00 X 00.38-20GA														7,75 [0.305]	9,53 [0.375]	7,75 [0.305]	9,53 [0.375]	7,75 [0.305]	9,53 [0.375]
03.00 X 00.38-18GA														7,05 [0.278]	9,40 [0.370]	7,05 [0.278]	9,40 [0.370]	7,05 [0.278]	9,40 [0.370]
03.00 X 00.50-16GA	19,13 [0.753]				9,40 [0.370]	14,27 [0.562]			9,40 [0.370]	12,70 [0.500]				9,40 [0.370]	12,70 [0.500]				

NOTES:

- INTERNAL SURFACE 0.3 μm Ra [11 μ-in Ra]
- EXTERNAL 1.6 μm Ra [64 μ-in Ra]
- FOR 3,175 [0.125] OUTLET USE 6,35 [0.25] PORT, OUTLET USES A REDUCER.

FOR 0.25" TO 0.75" SAMPLE VALVES, TOGGLE STYLE HANDLE (HB / TC / BW)

FOR 1.00" TO 3.00" SAMPLE VALVES, TOGGLE STYLE HANDLE (HB / TC / BW)



ECN# 12623

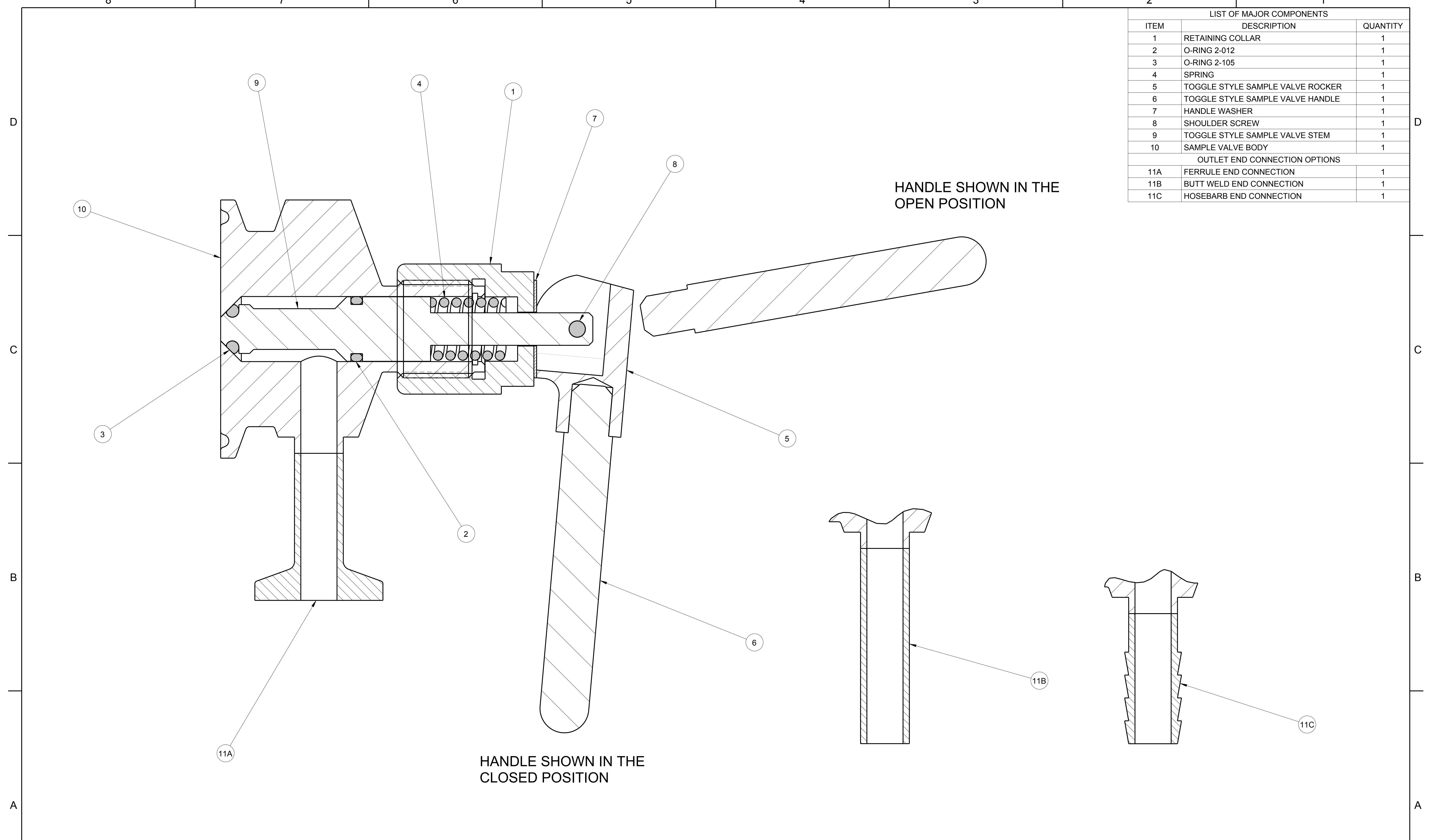
UNLESS OTHERWISE SPECIFIED, ALL DIMENSIONS IN BRACKETS [ ] ARE INCHES.

PATTERN NO.

THIS DOCUMENT IS THE SOLE PROPERTY OF ITT CORPORATION, OR ITS SUBSIDIARY, AND IS PROVIDED SUBJECT TO RETURN. IT IS ISSUED IN STRICT CONFIDENCE AND SHALL NOT BE REPRODUCED, OR COPIED, OR DISCLOSED IN WHOLE OR IN PART, OR USED AS THE BASIS FOR THE MANUFACTURE OR SALES OF APPARATUS OR PARTS TO WHICH THE DOCUMENT RELATES, WITHOUT THE EXPRESS WRITTEN CONSENT OF ITT CORPORATION, OR ITS SUBSIDIARY. THIS LEGEND SHALL BE MARKED ON ANY REPRODUCTION HEREOF, IN WHOLE OR IN PART. ALL RIGHTS TO THE INFORMATION AND DESIGN DISCLOSED HEREIN ARE RESERVED TO ITT CORPORATION, OR ITS SUBSIDIARY.

THIRD ANGLE PROJECTION	UNLESS OTHERWISE NOTED	WEIGHT	SCALE	SAMPLE VALVE TOGGLE STYLE HANDLE TC X (HB/TC/BW) ANSI 00.25 TO 03.00 SUPERSEDES: -	ITT LANCASTER, PA USA
	INCH	DATE	BY		
UNLESS OTHERWISE SPECIFIED, ALL DIMENSIONS ARE IN INCHES	X = ±0.06	MM	DATE	P.N.	SIZE
	X = ±0.03	[X] = ±[76]	DWN	08-May-12	
	XX = ±0.02	[XX] = ±[12]	CHKD	08-May-12	SHEET
	XXX = ±0.005	X* = ±1	APVD	08-May-12	REV
	XXX = ±1/16	X* = ±1			
	X* = ±5"	X* = ±5"			
		REMOVE ALL BURRS AND SHARP EDGES. MACHINED SURFACES TO BE EXCEPT AS NOTED.			

LIST OF MAJOR COMPONENTS		
ITEM	DESCRIPTION	QUANTITY
1	RETAINING COLLAR	1
2	O-RING 2-012	1
3	O-RING 2-105	1
4	SPRING	1
5	TOGGLE STYLE SAMPLE VALVE ROCKER	1
6	TOGGLE STYLE SAMPLE VALVE HANDLE	1
7	HANDLE WASHER	1
8	SHOULDER SCREW	1
9	TOGGLE STYLE SAMPLE VALVE STEM	1
10	SAMPLE VALVE BODY	1
OUTLET END CONNECTION OPTIONS		
11A	FERRULE END CONNECTION	1
11B	BUTT WELD END CONNECTION	1
11C	HOSEBARB END CONNECTION	1



ECN# 12623 UNLESS OTHERWISE SPECIFIED, ALL DIMENSIONS IN BRACKETS [ ] ARE INCHES. PATTERN NO.

THIS DOCUMENT IS THE SOLE PROPERTY OF ITT CORPORATION, OR ITS SUBSIDIARY, AND IS PROVIDED SUBJECT TO RETURN. IT IS ISSUED IN STRICT CONFIDENCE AND SHALL NOT BE REPRODUCED, OR COPIED, OR DISCLOSED IN WHOLE OR IN PART, OR USED AS THE BASIS FOR THE MANUFACTURE OR SALES OF APPARATUS OR PARTS TO WHICH THE DOCUMENT RELATES, WITHOUT THE EXPRESS WRITTEN CONSENT OF ITT CORPORATION, OR ITS SUBSIDIARY. THIS LEGEND SHALL BE MARKED ON ANY REPRODUCTION HEREOF, IN WHOLE OR IN PART. ALL RIGHTS TO THE INFORMATION AND DESIGN DISCLOSED HEREIN ARE RESERVED TO ITT CORPORATION, OR ITS SUBSIDIARY.	THIRD ANGLE PROJECTION 	UNLESS OTHERWISE NOTED INCH X = ±0.06 .X = ±0.03 .XX = ±0.02 .XXX = ±0.005 XXX = ±1/16 X' = ±5° X'' = ±1°	UNLESS OTHERWISE NOTED MM [X] = ±[76] [XX] = ±[5] [XXX] = ±[12] X' = ±5° X'' = ±1°	WEIGHT SCALE 1.000	SAMPLE VALVE TOGGLE STYLE HANDLE TC X (HB/TC/BW) ANSI 00.25 TO 03.00 SUPERSEDES: -	LANCASTER, PA USA	SIZE D	DRAWING NUMBER K17434	SHEET 2 OF 2	REV -
	UNLESS OTHERWISE SPECIFIED, ALL DIMENSIONS ARE IN INCHES	REMOVE ALL BURRS AND SHARP EDGES. MACHINED SURFACES TO BE EXCEPT AS NOTED.	CHKD 08-May-12 S.P. APVD 08-May-12 S.P.	DATE BY 08-May-12 P.N. 08-May-12 S.P.	SUPPLIES	SUPPLIES	SUPPLIES	SUPPLIES	SUPPLIES	SUPPLIES